

HB Series, HC Series, HD Series, H-Plus Series, SDX-2200 Series, and HXF-40 Series

Conveyor Components

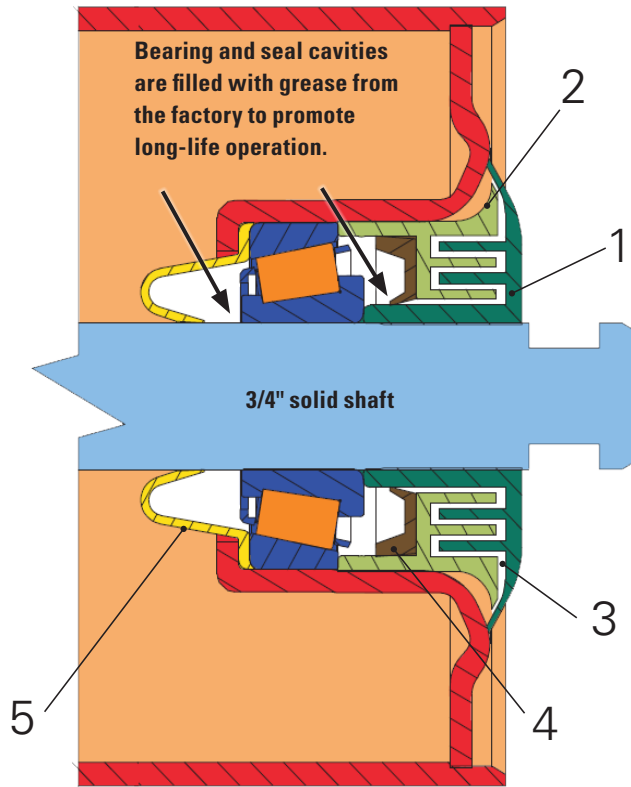


Modified geometry, 3/4" tapered roller bearing

HB series

CEMA B

The advanced five-stage seal design contributes to long-life operation without re-lubrication



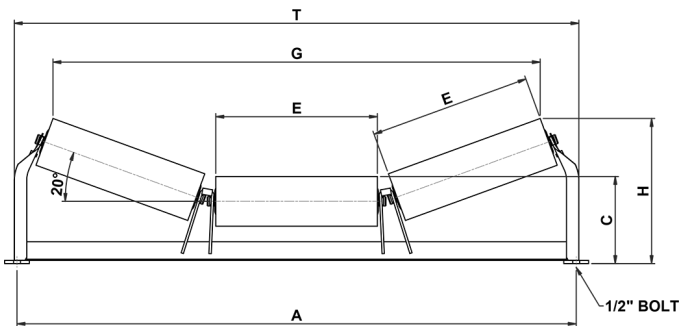
Five-stage seal design

1. An exterior shield provides an initial barrier to divert contaminants away from the bearing cavity.
2. A flinger employs the natural centrifugal forces of a rotating idler roll to redirect potential contaminants away from the bearing cavity.
3. A grease-filled, horizontal labyrinth seal impedes progress of contaminants toward the bearing.
4. A contact lip seal provides additional sealing protection and keeps lubricant in the bearing cavity.
5. A rear seal provides added protection for the grease reservoir.

20 deg. troughing idler

4" dia. 61AHB401-BW

5" dia. 61AHB501-BW



Belt width	Reference dimensions										
	Wt.		A	C		T	E	G		H	
	4"	5"		4"	5"			4"	5"	4"	5"
18	30	32	27	7 ¹ / ₁₆	7 ⁹ / ₁₆	28 ¹ / ₂	7 ¹ / ₈	22 ⁵ / ₁₆	21 ¹⁵ / ₁₆	9 ⁵ / ₈	10 ¹ / ₈
24	34	37	33	7 ¹ / ₁₆	7 ⁹ / ₁₆	33 ¹⁵ / ₁₆	9	27 ¹¹ / ₁₆	27 ³ / ₈	10 ⁵ / ₁₆	10 ³ / ₄
30	42	44	39	7 ¹ / ₁₆	7 ⁹ / ₁₆	39 ¹¹ / ₁₆	11	33 ⁷ / ₁₆	33 ¹ / ₈	11	11 ¹ / ₂
36	47	50	45	7 ¹ / ₁₆	7 ⁹ / ₁₆	45 ⁷ / ₁₆	13	39 ¹ / ₄	38 ⁷ / ₈	11 ¹¹ / ₁₆	12 ¹ / ₈
42	55	60	51	7 ⁷ / ₁₆	7 ¹⁵ / ₁₆	52 ¹ / ₁₆	15	45	44 ⁵ / ₈	12 ³ / ₄	13 ³ / ₁₆
48	61	65	57	7 ⁷ / ₁₆	7 ¹⁵ / ₁₆	57 ¹³ / ₁₆	17	50 ³ / ₄	50 ³ / ₈	13 ⁹ / ₁₆	13 ⁷ / ₈

Bolts, nuts, and washers for mounting are not included. Weights are in pounds, and lengths are in inches. Weights and dimensions are subject to change or correction without notice. Use certified prints for construction purposes.

Tapered roller bearing

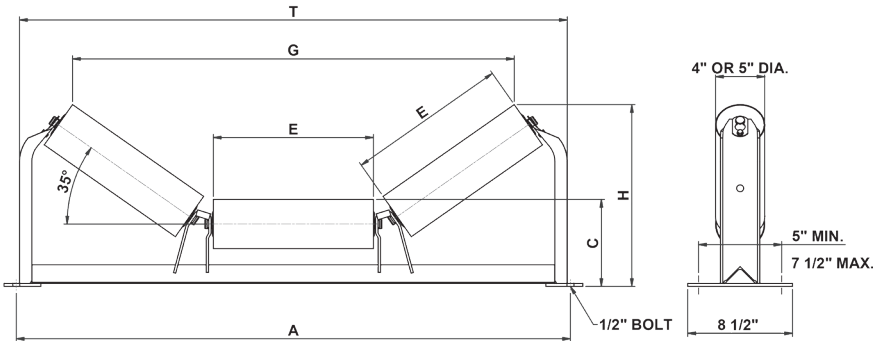
HB series

CEMA B

35 deg. troughing idler

4" dia. 61AHB430-BW

5" dia. 61AHB530-BW

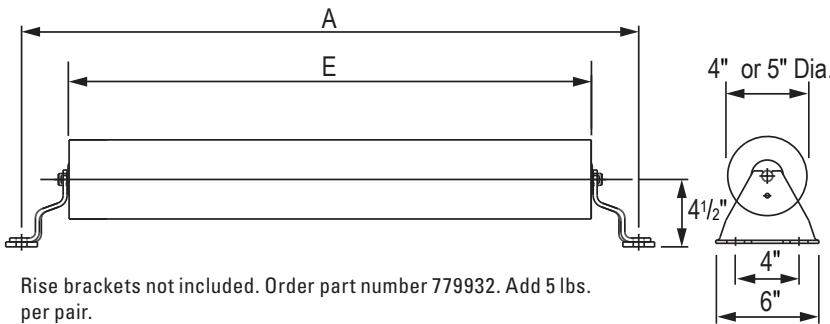


Belt width	Reference dimensions										
	Wt. Wt.		A	C		T	E	G		H	
	4"	5"		4"	5"			4"	5"	4"	5"
18	30	34	27	7 ¹ / ₁₆	7 ⁹ / ₁₆	28 ¹⁵ / ₁₆	7 ¹ / ₈	20 ³ / ₈	19 ¹³ / ₁₆	11 ³ / ₈	11 ¹³ / ₁₆
24	34	38	33	7 ¹ / ₁₆	7 ⁹ / ₁₆	33 ¹⁵ / ₁₆	9	25 ⁵ / ₁₆	24 ³ / ₄	12 ⁷ / ₁₆	12 ⁷ / ₈
30	42	47	39	7 ¹ / ₁₆	7 ⁹ / ₁₆	39 ³ / ₁₆	11	30 ⁹ / ₁₆	30	13 ⁵ / ₈	14 ¹ / ₁₆
36	47	53	45	7 ¹ / ₁₆	7 ⁹ / ₁₆	44 ⁷ / ₁₆	13	35 ⁷ / ₈	35 ⁵ / ₁₆	14 ³ / ₄	15 ³ / ₁₆
42	55	62	51	7 ¹ / ₁₆	7 ¹⁵ / ₁₆	50 ⁵ / ₈	15	41 ¹ / ₈	40 ⁹ / ₁₆	16 ¹ / ₄	16 ¹¹ / ₁₆
48	61	67	57	7 ¹ / ₁₆	7 ¹⁵ / ₁₆	55 ⁷ / ₈	17	46 ⁷ / ₁₆	45 ⁷ / ₈	17 ⁷ / ₁₆	17 ¹³ / ₁₆

Flat belt roll

4" dia. 61AHB410-BW

5" dia. 61AHB510-BW



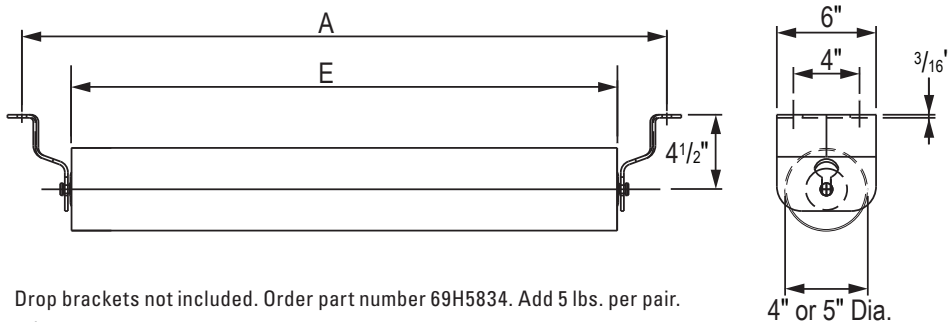
Rise brackets not included. Order part number 779932. Add 5 lbs. per pair.

Belt width	Wt. Wt.		A	E
	4"	5"		
18	15	16	27	21
24	19	20	33	27
30	23	24	39	33
36	27	28	45	39
42	30	32	51	45
48	34	36	57	51

Return roll

4" dia. 61AHB410-BW

5" dia. 61AHB510-BW



Drop brackets not included. Order part number 69H5834. Add 5 lbs. per pair.
1 1/2 drop bracket also available. Order part number 779934. Add 3 lbs. per pair.

Belt width	Wt. Wt.		A	E
	4"	5"		
18	15	16	27	21
24	19	20	33	27
30	23	24	39	33
36	27	28	45	39
42	30	32	51	45
48	34	36	57	51

Modified geometry, 3/4" tapered roller bearing

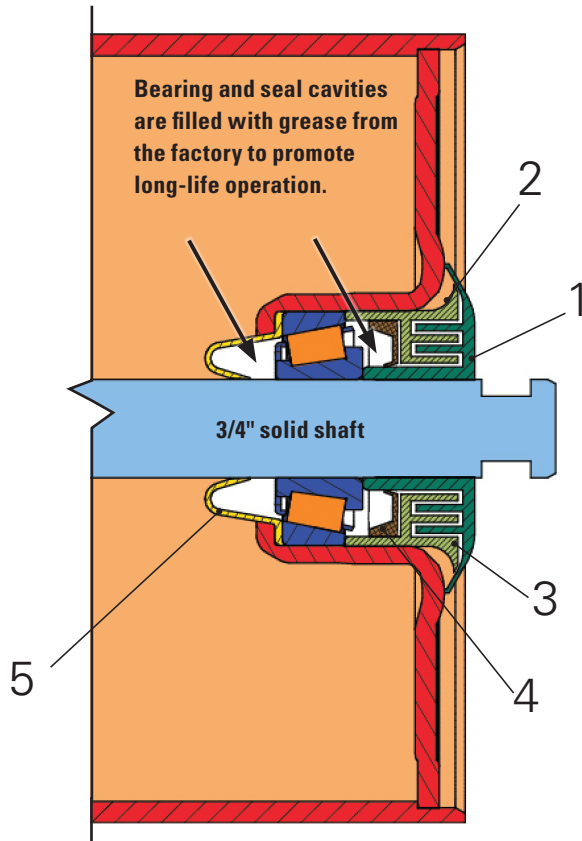
HC series

CEMA C/D*

The advanced five-stage seal design contributes to long-life operation without re-lubrication

Five-stage seal design

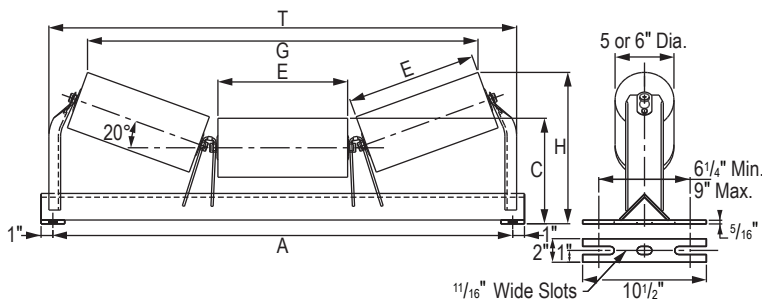
1. An exterior shield provides an initial barrier to divert contaminants away from the bearing cavity.
2. A flinger employs the natural centrifugal forces of a rotating idler roll to redirect potential contaminants away from the bearing cavity.
3. A grease-filled, horizontal labyrinth seal impedes progress of contaminants toward the bearing.
4. A contact lip seal provides additional sealing protection and keeps lubricant in the bearing cavity.
5. A rear seal provides added protection for the grease reservoir.



20 deg. troughing idler

5" dia. 69AHC501-BW

6" dia. 69AHC601-BW

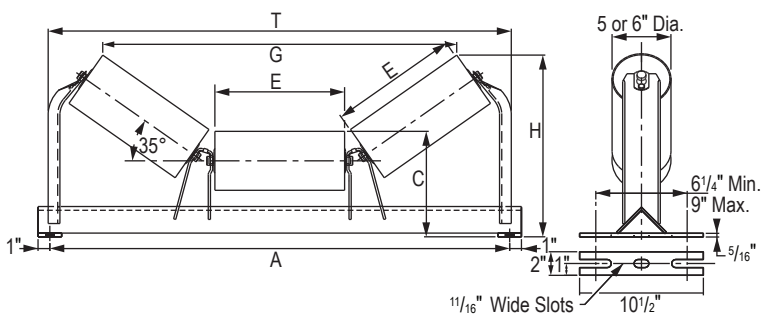


Belt width	Reference dimensions										
	Wt.		A	C		T	E	G		H	
	5"	6"		5"	6"			5"	6"	5"	6"
18	43	51	27	8 ⁵ / ₈	9 ¹ / ₈	28 ⁵ / ₈	7 ¹ / ₈	21 ³¹ / ₃₂	21 ⁵ / ₈	11 ¹¹ / ₃₂	11 ¹¹ / ₃₂
24	49	58	33	8 ⁵ / ₈	9 ¹ / ₈	33 ²⁹ / ₃₂	9	27 ³ / ₈	27	11 ²⁷ / ₃₂	12 ⁵ / ₁₆
30	58	69	39	8 ⁵ / ₈	9 ¹ / ₈	39 ¹¹ / ₁₆	11	33 ¹ / ₈	32 ²⁵ / ₃₂	12 ¹ / ₂	13
36	65	77	45	8 ⁵ / ₈	9 ¹ / ₈	45 ⁷ / ₁₆	13	38 ⁷ / ₈	38 ¹⁷ / ₃₂	13 ³ / ₁₆	13 ¹¹ / ₁₆
42	72	85	51	9	9 ¹ / ₂	51 ³ / ₁₆	15	44 ⁵ / ₈	44 ⁵ / ₁₆	14 ¹ / ₄	14 ²⁷ / ₃₂
48	89	104	57	9 ³ / ₈	9 ⁷ / ₈	56 ³¹ / ₃₂	17	50 ³ / ₈	50 ¹ / ₁₆	15 ⁵ / ₁₆	15 ²⁵ / ₃₂
54	97	113	63	9 ³ / ₈	9 ⁷ / ₈	62 ²³ / ₃₂	19	56 ⁵ / ₃₂	55 ¹³ / ₁₆	16	16 ¹ / ₂
60	105	123	69	9 ³ / ₈	9 ⁷ / ₈	68 ¹⁵ / ₃₂	21	61 ²⁹ / ₃₂	61 ⁹ / ₁₆	16 ¹¹ / ₁₆	17 ⁵ / ₃₂

35 deg. troughing idler

5" dia. 69AHC530-BW

6" dia. 69AHC630-BW



Belt width	Reference dimensions										
	Wt.		A	C		T	E	G		H	
	5"	6"		5"	6"			5"	6"	5"	6"
18	44	52	27	8 ⁵ / ₈	9 ¹ / ₈	28 ⁵ / ₈	7 ¹ / ₈	19 ²⁵ / ₃₂	19 ³ / ₁₆	12 ⁷ / ₈	13 ¹ / ₄
24	50	59	33	8 ⁵ / ₈	9 ¹ / ₈	33 ²⁹ / ₃₂	9	24 ³ / ₄	24 ⁵ / ₃₂	13 ¹⁵ / ₁₆	14 ³ / ₈
30	59	70	39	8 ⁵ / ₈	9 ¹ / ₈	39 ³ / ₁₆	11	30	29 ⁷ / ₁₆	15 ³ / ₃₂	15 ¹ / ₂
36	66	78	45	8 ⁵ / ₈	9 ¹ / ₈	44 ¹⁵ / ₃₂	13	35 ⁵ / ₁₆	34 ²³ / ₃₂	16 ¹ / ₄	16 ⁵ / ₈
42	73	86	51	9	9 ¹ / ₂	49 ³ / ₄	15	40 ⁹ / ₁₆	40	17 ³ / ₄	18 ³ / ₁₆
48	90	105	57	9 ³ / ₈	9 ⁷ / ₈	55	17	45 ²⁷ / ₃₂	45 ⁷ / ₃₂	19 ⁹ / ₃₂	19 ¹¹ / ₁₆
54	98	114	63	9 ³ / ₈	9 ⁷ / ₈	60 ⁵ / ₁₆	19	51 ¹ / ₈	50 ⁹ / ₁₆	20 ⁷ / ₁₆	20 ²⁷ / ₃₂
60	106	124	69	9 ³ / ₈	9 ⁷ / ₈	65 ⁹ / ₁₆	21	56 ¹³ / ₃₂	55 ¹³ / ₁₆	21 ⁹ / ₁₆	22

Bolts, nuts, and washers for mounting are not included. Weights are in pounds, and lengths are in inches. Weights and dimensions are subject to change or correction without notice. Use certified prints for construction purposes. Also available with 4" diameter rolls.

*HC troughing idlers meet CEMA D specifications through 36" BW.

Tapered roller bearing

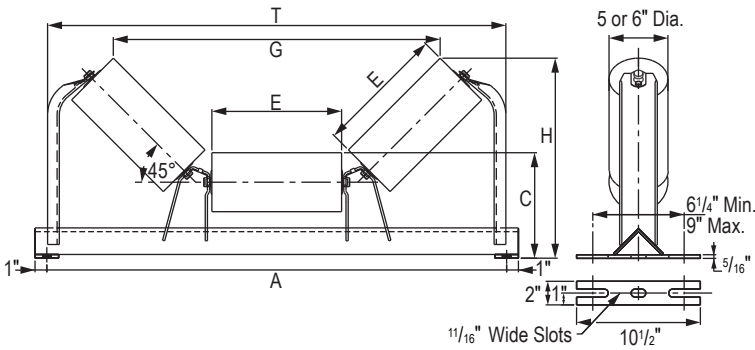
HC series

CEMA C/D*

45 deg. troughing idler

5" dia. 69AHC542-BW

6" dia. 69AHC642-BW

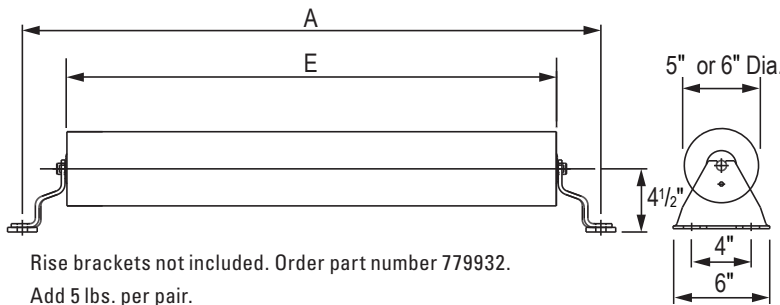


Belt width	Reference dimensions										
	Wt. Wt.		A	C		T	E	G			H
	5"	6"		5"	6"			5"	6"	5"	
18	45	53	27	8 ⁹ / ₁₆	9 ¹ / ₁₆	29 ¹ / ₄	7	17 ¹⁵ / ₁₆	17 ¹ / ₄	13 ¹¹ / ₁₆	14
24	51	60	33	8 ⁹ / ₁₆	9 ¹ / ₁₆	33 ¹³ / ₁₆	9	22 ³ / ₄	22 ¹ / ₁₆	15 ¹ / ₈	15 ⁷ / ₁₆
30	60	71	39	8 ⁹ / ₁₆	9 ¹ / ₁₆	38 ⁵ / ₈	11	27 ⁹ / ₁₆	26 ⁷ / ₈	16 ⁹ / ₁₆	16 ⁷ / ₈
36	67	79	45	8 ⁹ / ₁₆	9 ¹ / ₁₆	43 ⁷ / ₁₆	13	32 ³ / ₈	31 ¹ / ₁₆	18	18 ⁵ / ₁₆
42	74	87	51	8 ⁷ / ₈	9 ³ / ₈	49 ³ / ₈	15	37 ³ / ₁₆	36 ¹ / ₂	19 ³ / ₄	20 ¹ / ₁₆
48	91	106	57	9 ¹ / ₄	9 ³ / ₄	54 ¹ / ₄	17	41 ⁵ / ₁₆	41 ¹ / ₂	21 ¹ / ₂	22 ³ / ₁₆
54	99	115	63	9 ¹ / ₄	9 ³ / ₄	59 ¹ / ₁₆	19	46 ¹³ / ₁₆	46 ¹ / ₈	23 ³ / ₄	24 ⁵ / ₁₆
60	107	125	69	9 ¹ / ₄	9 ³ / ₄	63 ⁷ / ₈	21	51 ⁵ / ₈	50 ¹⁵ / ₁₆	25 ³ / ₄	26 ⁷ / ₁₆

Flat belt roll

5" dia. 69AHC510-BW

6" dia. 69AHC610-BW



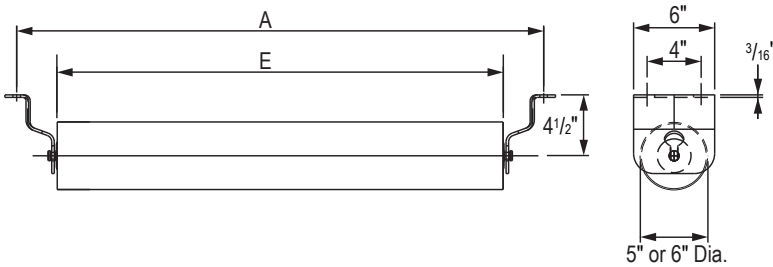
Rise brackets not included. Order part number 779932.
Add 5 lbs. per pair.

Belt width	Reference dimensions			
	Wt. 5"	Wt. 6"	A	E
18	17	23	27	21
24	21	28	33	27
30	28	36	39	33
36	32	42	45	39
42	37	48	51	45
48	41	54	57	51
54	Use HD series			
60	Use HD series			

Return roll

5" dia. 69AHC510-BW

6" dia. 69AHC610-BW



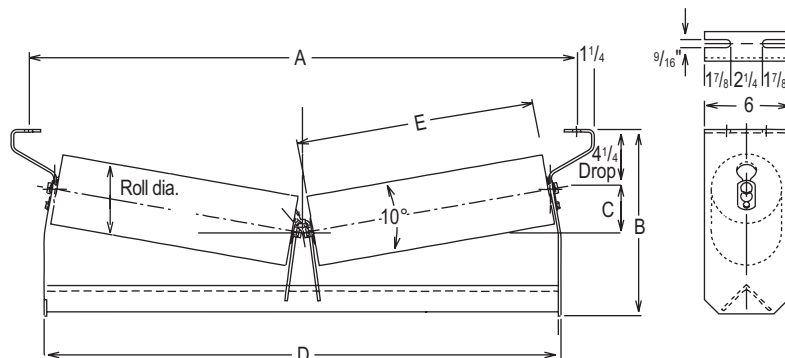
Drop brackets not included. Order part number 69H5834. Add 5 lbs. per pair.
1/2 drop bracket also available. Order part number 779934. Add 3 lbs. per pair.

Belt width	Reference dimensions			
	Wt. 5"	Wt. 6"	A	E
18	17	23	27	21
24	21	28	33	27
30	28	36	39	33
36	32	42	45	39
42	37	48	51	45
48	41	54	57	51
54	Use HD series			
60	Use HD series			

10 deg. V return idler

5" dia. 69AHC528-BW

6" dia. 69AHC628-BW



Belt width	Reference dimensions				
	A	B	C	D	E
24	33	12 ¹³ / ₁₆	2 ²⁵ / ₃₂	32 ⁷ / ₈	15
30	39	13 ¹ / ₈	3 ¹ / ₈	36 ⁷ / ₈	17
36	45	13 ¹³ / ₁₆	3 ¹³ / ₁₆	44 ⁷ / ₈	21
42	51	14 ⁹ / ₁₆	4 ³ / ₁₆	48 ⁷ / ₈	23
48	57	15 ¹ / ₄	4 ⁷ / ₈	56 ⁷ / ₈	27
54	63	15 ⁵ / ₈	5 ⁷ / ₃₂	60 ⁷ / ₈	29
60	69	16 ⁵ / ₁₆	5 ²⁹ / ₃₂	68 ³ / ₈	33

Bolts, nuts, and washers for mounting are not included. Weights are in pounds, and lengths are in inches. Weights and dimensions are subject to change or correction without notice. Use certified prints for construction purposes. Also available with 4" diameter rolls.

*HC troughing idlers meet CEMA D specifications through 36" BW.

Tapered roller bearing

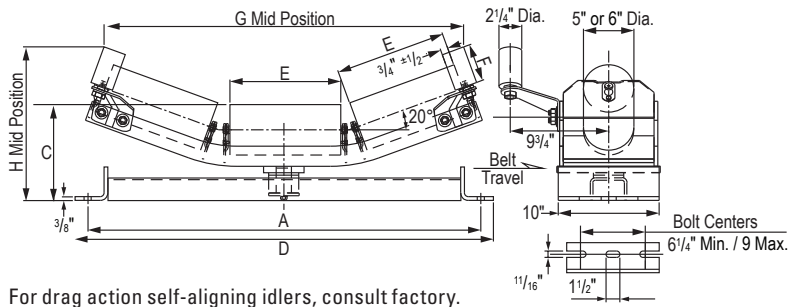
HC series

CEMA C/D*

20 deg. troughing training idler

5" dia. 69AHC503-BW

6" dia. 69AHC603-BW

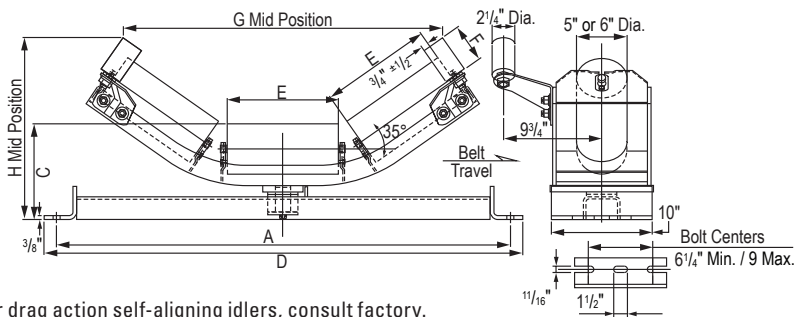


Belt width	Reference dimensions								Wt. Wt.	
	A	C		D	E	F	G	H	5"	6"
18	27	9 1/8	9 5/8	29 1/2	7 1/8	4 1/8	24	13 3/4	91	103
24	33	9 1/8	9 5/8	35 1/2	9	4 1/8	29 11/16	14 7/16	101	113
30	39	9 1/2	10	41 1/2	11	4 1/8	35 1/16	15 1/2	123	133
36	45	9 1/2	10	47 1/2	13	4 1/8	41 3/16	16 3/16	137	152
42	51	9 1/2	10	53 1/2	15	4 1/8	46 15/16	16 13/16	146	161
48	57	9 7/8	10 3/8	59 1/2	17	4 1/8	52 11/16	17 15/16	165	180
54	63	9 7/8	10 3/8	65 1/2	19	4 3/8	58 5/16	18 13/16	183	198
60	69	9 7/8	10 3/8	71 1/2	21	4 3/8	64 1/16	19 1/2	196	211

35 deg. troughing training idler

5" dia. 69AHC532-BW

6" dia. 69AHC632-BW

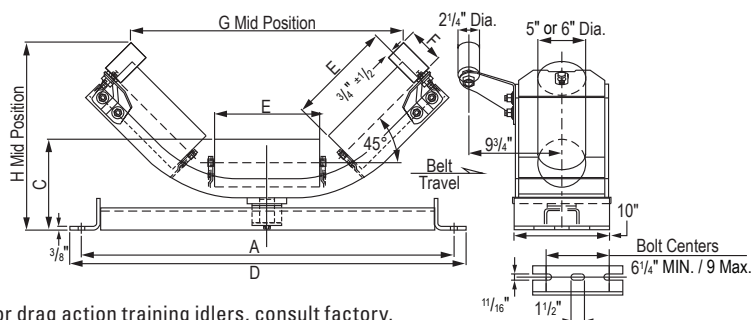


Belt width	Reference dimensions								Wt. Wt.	
	A	C		D	E	F	G	H	5"	6"
18	27	9 1/8	9 5/8	29 1/2	7 1/8	4 1/8	20 13/16	15 5/8	88	91
24	33	9 1/8	9 5/8	35 1/2	9	4 1/8	26 1/32	16 3/4	108	116
30	39	9 1/2	10	41 1/2	11	4 1/8	31 5/16	18 9/32	126	134
36	45	9 1/2	10	47 1/2	13	4 1/8	36 9/32	19 7/16	138	153
42	51	9 1/2	10	53 1/2	15	4 1/8	41 7/8	20 19/32	150	166
48	57	9 7/8	10 3/8	59 1/2	17	4 1/8	47 1/8	22 3/32	176	187
54	63	9 7/8	10 3/8	65 1/2	19	4 3/8	52 1/8	23 7/16	184	199
60	69	9 7/8	10 3/8	71 1/2	21	4 3/8	57 13/32	24 9/16	198	213

45 deg. troughing training idler

5" dia. 69AHC544-BW

6" dia. 69AHC644-BW



Belt width	Reference dimensions								Wt. Wt.	
	A	C		D	E	F	G	H	5"	6"
24	33	9 1/8	9 5/8	35 1/2	9	4 1/8	23 1/4	18 1/16	109	118
30	39	9 1/2	10	41 1/2	11	4 1/8	28 1/16	19 13/16	123	136
36	45	9 1/2	10	47 1/2	13	4 1/8	32 7/8	20 1/4	140	155
42	51	9 1/2	10	53 1/2	15	4 1/8	37 3/4	22 11/16	152	166
48	57	9 7/8	10 3/8	59 1/2	17	4 1/8	42 9/16	24 1/2	174	189
54	63	9 7/8	10 3/8	65 1/2	19	4 3/8	47 1/16	26 1/16	187	202
60	69	9 7/8	10 3/8	71 1/2	21	4 3/8	51 7/8	27 1/2	200	215

Bolts, nuts, and washers for mounting are not included. Weights are in pounds, and lengths are in inches. Weights and dimensions are subject to change or correction without notice. Use certified prints for construction purposes. Also available with 4" diameter rolls.

*HC troughing idlers meet CEMA D specifications through 36" BW.

Tapered roller bearing

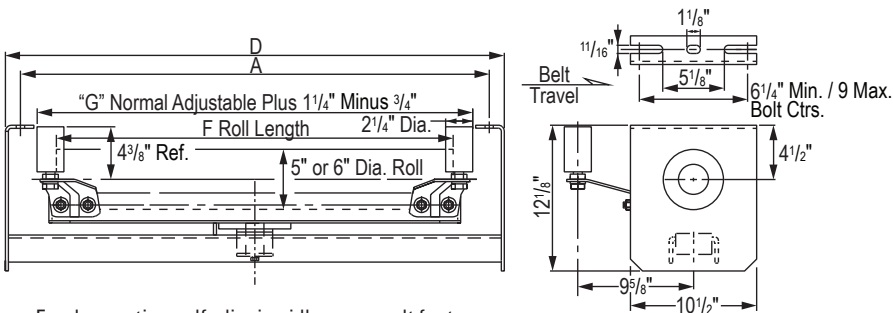
HC series

CEMA C

Return training idler

5" dia. 69AHC519-BW

6" dia. 69AHC619-BW

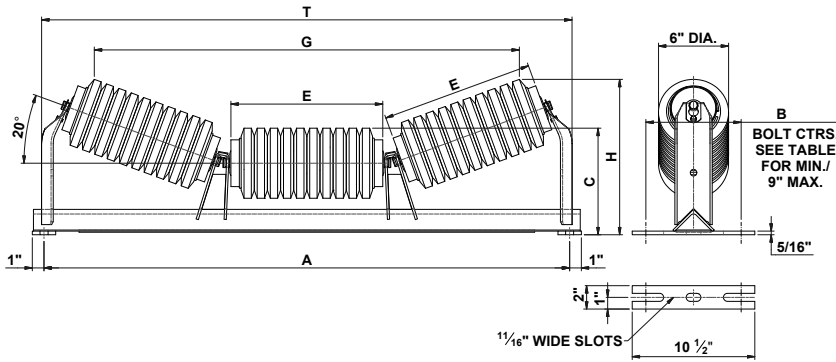


For drag action self-aligning idlers, consult factory.
Also available with 4" diameter rolls.

Belt width	Reference dimensions				Wt.		
	A	D	F	G	5"	6"	
18	27	29½	21	23½	96	101	
24	33	35½	27	29½	102	108	
30	39	41½	33	36	121	128	
36	45	47½	39	42	131	140	
42	51	53½	45	48	142	151	
48	57	59½	51	54	155	166	
54	Use HD series						
60	Use HD series						

20° impact troughing idler

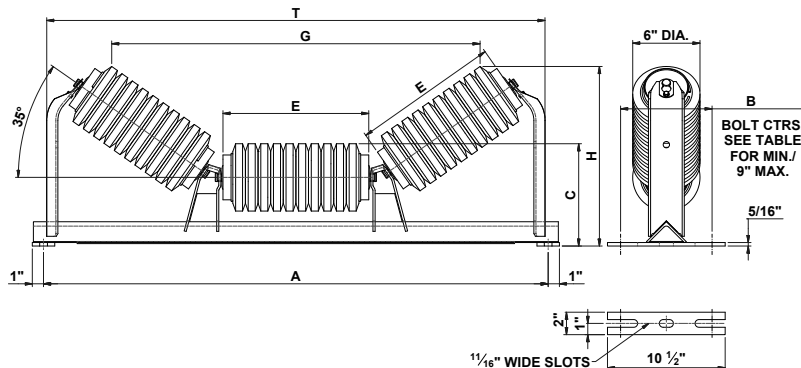
6" dia. 69AHC602-BW



Belt width	Reference dimensions							Wt.
	A	B	C	E	G	H	T	
18	27	6¼	9⅞	7⅞	18¾	11⅞	29	46
24	33	6¼	9⅞	9	25⅞	12⅞	35	55
30	39	6¼	9⅞	11	31⅞	12¾	41	66
36	45	6¼	9⅞	13	36¾	13⅞	47	74
42	51	6¼	9¾	15	42⅞	14¼	53	87
48	57	7	9⅞	17	48¾	15½	59	111
54	63	7	9⅞	19	54¾	16⅞	65	123
60	69	7	9⅞	21	60¾	16⅞	71	134

35° impact troughing idler

6" dia. 69AHC636-BW



Belt width	Reference dimensions							Wt.
	A	B	C	E	G	H	T	
18	27	6¼	9⅞	7⅞	17⅞	12⅞	29	48
24	33	6¼	9⅞	9	23	13⅞	35	58
30	39	6¼	9⅞	11	28⅞	15⅞	41	68
36	45	6¼	9⅞	13	32⅞	16	47	76
42	51	6¼	9¾	15	38⅞	17½	53	90
48	57	7	9⅞	17	44⅞	19⅞	59	115
54	63	7	9⅞	19	49⅞	20⅞	65	126
60	69	7	9⅞	21	54⅞	21⅞	71	138

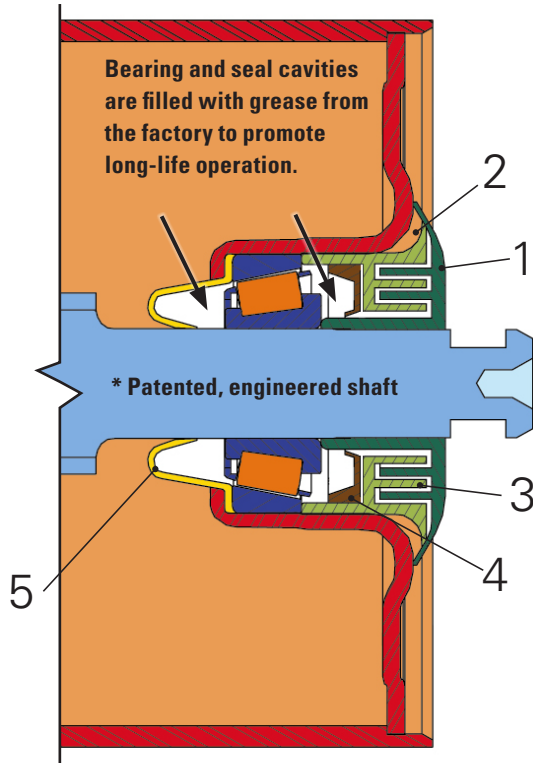
Bolts, nuts, and washers for mounting are not included. Weights are in pounds, and lengths are in inches. Weights and dimensions are subject to change or correction without notice. Use certified prints for construction purposes.

Modified geometry, 3/4" tapered roller bearing

HD series

CEMA D

The advanced five-stage seal design contributes to long-life operation without re-lubrication



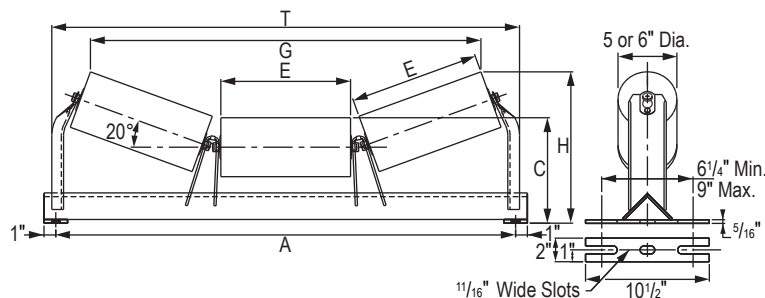
1. An exterior shield provides an initial barrier to divert contaminants away from the bearing cavity.
2. A flinger employs the natural centrifugal forces of a rotating idler roll to redirect potential contaminants away from the bearing cavity.
3. A grease-filled, horizontal labyrinth seal impedes progress of contaminants toward the bearing.
4. A contact lip seal provides additional sealing protection and keeps lubricant in the bearing cavity.
5. A rear seal provides added protection for the grease reservoir.

*Available on all return rolls and on all 42-inch belt width and wider center troughing rolls.

20 deg. troughing idler

5" dia. 72AHD501-BW

6" dia. 72AHD601-BW

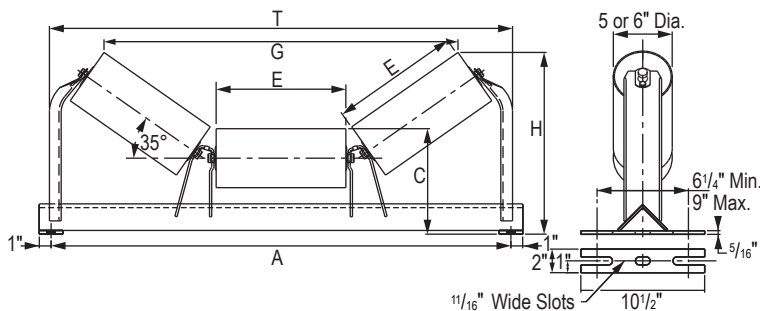


Belt width	Wt. 5"	Wt. 6"	A	Reference dimensions							
				C		T	E	G		H	
				5"	6"			5"	6"	5"	6"
24				Use HC series							
30				Use HC series							
36				Use HC series							
42	72	85	51	8 7/8	9 3/8	52 1/8	15	44 5/8	44 5/16	14 1/4	14 5/8
48	89	104	57	9 3/8	9 7/8	57 7/8	17	50 3/8	50 1/16	15 5/16	15 25/32
54	97	113	63	9 3/8	9 7/8	63 19/32	19	56 5/32	55 13/16	16	16 1/2
60	105	123	69	9 3/8	9 7/8	69 11/32	21	61 29/32	61 9/16	16 11/16	17 9/32
66	133	147	75	9 3/4	10 1/4	77 1/2	23	70 1/16	69 11/16	17 3/4	18 1/4
72	145	159	81	9 3/4	10 1/4	80 7/8	25	73 7/16	73 1/16	18 7/16	18 15/16

35 deg. troughing idler

5" dia. 72AHD530-BW

6" dia. 72AHD630-BW



Belt width	Wt. 5"	Wt. 6"	A	Reference dimensions							
				C		T	E	G		H	
				5"	6"			5"	6"	5"	6"
24				Use HC series							
30				Use HC series							
36				Use HC series							
42	73	86	51	8 7/8	9 3/8	50 9/16	15	40 9/16	40	17 11/16	18 1/16
48	90	105	57	9 3/8	9 7/8	56 1/16	17	46 1/32	45 1/2	19 3/16	19 9/16
54	98	114	63	9 3/8	9 7/8	61 3/16	19	51 1/8	50 9/16	20 7/16	20 27/32
60	106	124	69	9 3/8	9 7/8	66 7/16	21	56 13/32	55 13/16	21 9/16	22
66	138	153	75	9 3/4	10 1/4	71 3/4	23	61 11/16	61 1/8	23 3/8	23 1/2
72	150	165	81	9 3/4	10 1/4	77	25	66 15/16	66 3/8	24 1/4	24 5/8

Bolts, nuts, and washers for mounting are not included. Weights are in pounds, and lengths are in inches. Weights and dimensions are subject to change or correction without notice. Use certified prints for construction purposes.

Tapered roller bearing

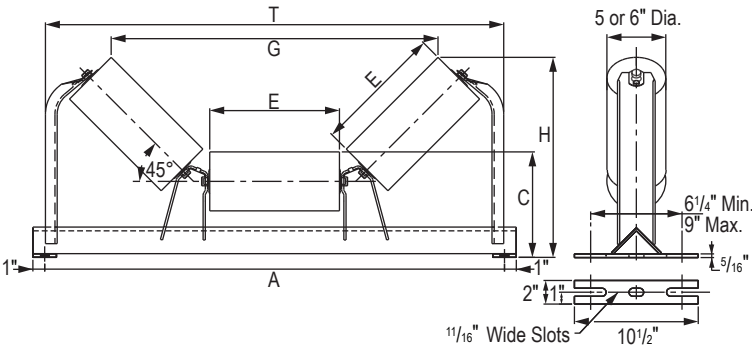
HD series

CEMA D

45 deg. troughing idler

5" dia. 72AHD542-BW

6" dia. 72AHD642-BW

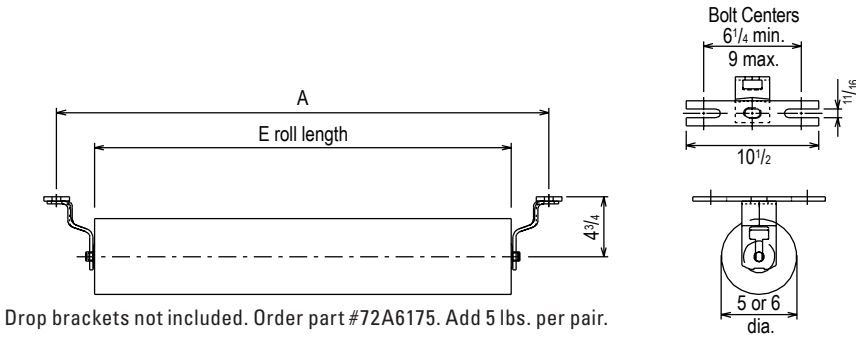


Belt width	Wt.		A	C		T	E	G		H	
	5"	6"		5"	6"			5"	6"		
24											
30											
36											
42	74	87	51	8 ⁷ / ₈	9 ³ / ₈	49 ³ / ₈	15	37 ³ / ₁₆	36 ¹ / ₂	19 ³ / ₄	20 ¹ / ₁₆
48	91	106	57	9 ¹ / ₄	9 ³ / ₄	54 ¹ / ₄	17	41 ⁵ / ₁₆	41 ⁵ / ₁₆	21 ⁹ / ₁₆	21 ⁷ / ₈
54	99	115	63	9 ¹ / ₄	9 ³ / ₄	59 ¹ / ₁₆	19	46 ¹³ / ₁₆	46 ¹ / ₈	23	23 ⁵ / ₁₆
60	107	125	69	9 ¹ / ₄	9 ³ / ₄	63 ⁷ / ₈	21	51 ⁵ / ₈	50 ¹⁵ / ₁₆	24 ⁷ / ₁₆	24 ³ / ₄
72	153	168	81	9 ⁵ / ₈	10 ¹ / ₈	73 ¹ / ₂	25	61 ¹ / ₄	60 ⁹ / ₁₆	27 ¹¹ / ₁₆	28

Return roll

5" dia. 72AHD510-BW

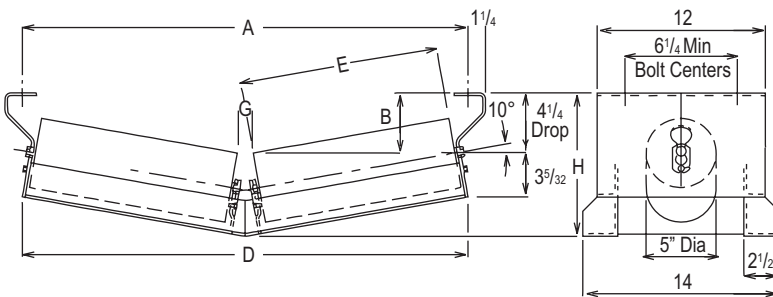
6" dia. 72AHD610-BW



Belt width	A	E	Wt.	
			5"	6"
24	33	27	33	39
30	39	33	37	44
36	45	39	41	50
42	51	45	46	55
48	57	51	51	61
54	63	57	54	67
60	69	63	60	75
66	75	69	67	82
72	81	75	75	90

10 deg. V return idler

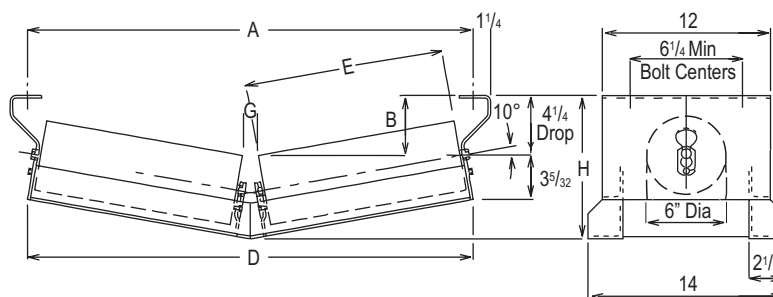
5" dia. 72AHD528-BW



Belt width	Reference dimensions					
	A	B	D	E	G	H
30	39	4 ³ / ₄	39	17	2 ¹⁹ / ₃₂	10 ¹³ / ₁₆
36	45	5 ¹ / ₂	45	21	1 ¹¹ / ₁₆	11 ¹¹ / ₃₂
42	51	5 ¹¹ / ₁₆	51	23	2 ²⁵ / ₃₂	11 ⁷ / ₈
48	57	6 ¹ / ₂	57	27	7 ⁷ / ₈	12 ¹³ / ₃₂
54	63	6 ⁷ / ₈	63	29	2 ¹⁵ / ₁₆	12 ¹⁵ / ₁₆
60	69	7 ⁹ / ₁₆	69	33	1 ¹ / ₁₆	13 ¹⁵ / ₃₂
66	75	7 ²⁹ / ₃₂	75	35	3 ¹ / ₈	13 ³¹ / ₃₂
72	81	8 ¹⁹ / ₃₂	81	39	1 ¹ / ₄	14 ¹⁷ / ₃₂
78	87	9 ¹ / ₈	87	42	1 ³ / ₈	15 ¹ / ₃₂

10 deg. V return idler

6" dia. 72AHD628-BW



Belt width	Reference dimensions					
	A	B	D	E	G	H
30	39	4 ¹ / ₄	39	17	2 ¹⁹ / ₃₂	10 ¹³ / ₁₆
36	45	5	45	21	1 ¹¹ / ₁₆	11 ¹¹ / ₃₂
42	51	5 ⁵ / ₁₆	51	23	2 ²⁵ / ₃₂	11 ⁷ / ₈
48	57	6	57	27	7 ⁷ / ₈	12 ¹³ / ₃₂
54	63	6 ³ / ₈	63	29	2 ¹⁵ / ₁₆	12 ¹⁵ / ₁₆
60	69	7 ¹ / ₁₆	69	33	1 ¹ / ₁₆	13 ¹⁵ / ₃₂
66	75	7 ¹³ / ₃₂	75	35	3 ¹ / ₈	13 ³¹ / ₃₂
72	81	8 ³ / ₃₂	81	39	1 ¹ / ₄	14 ¹⁷ / ₃₂

Bolts, nuts, and washers for mounting are not included. Weights are in pounds, and lengths are in inches. Weights and dimensions are subject to change or correction without notice. Use certified prints for construction purposes.

Tapered roller bearing

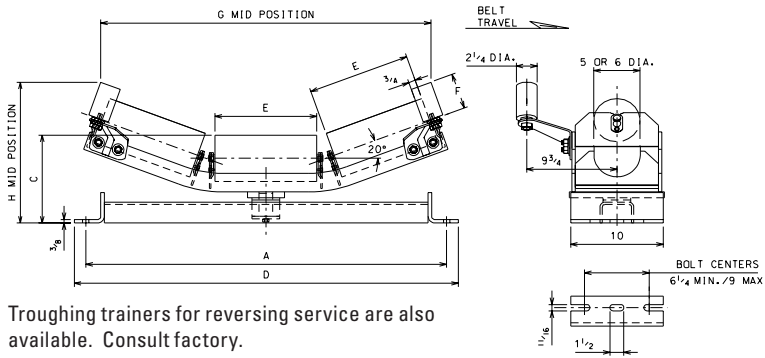
HD series

CEMA D

20 deg. troughing training idler

5" dia. 72AHD503-BW

6" dia. 72AHD603-BW



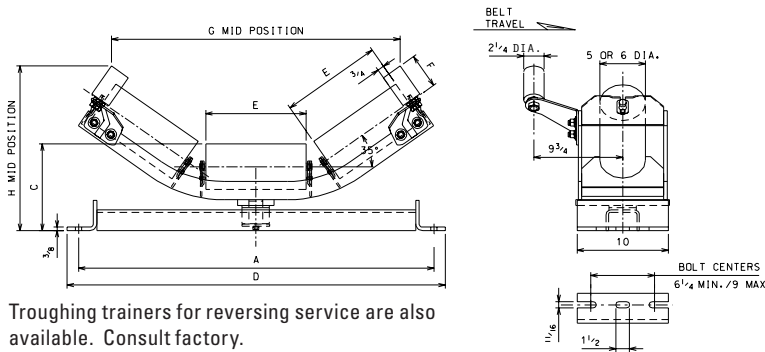
Troughing trainers for reversing service are also available. Consult factory.

Belt width	Reference dimensions								Wt. 5"	Wt. 6"
	A	C	D	E	F	G	H			
24										
30										
36										
42	51	9 1/2	10	53 1/2	15	4 1/8	47	16 13/16	148	161
48	57	9 7/8	10 3/8	59 1/2	17	4 1/8	52 3/4	18 1/8	165	180
54	63	9 7/8	10 3/8	65 1/2	19	4 3/8	58 5/16	18 13/16	183	198
60	69	9 7/8	10 3/8	71 1/2	21	4 3/8	64 1/16	19 1/2	196	211
72	81	10 1/4	10 3/4	83 1/2	25	4 3/8	75 9/16	21 1/4	211	226

35 deg. troughing training idler

5" dia. 72AHD532-BW

6" dia. 72AHD632-BW



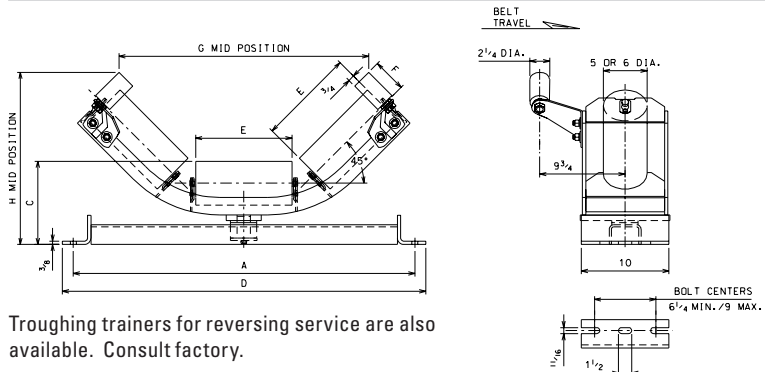
Troughing trainers for reversing service are also available. Consult factory.

Belt width	Reference dimensions								Wt. 5"	Wt. 6"
	A	C	D	E	F	G	H			
24										
30										
36										
42	51	9 1/2	10	53 1/2	15	4 1/8	41 7/8	20 19/32	150	166
48	57	9 7/8	10 3/8	59 1/2	17	4 1/8	47 1/8	22 3/32	176	187
54	63	9 7/8	10 3/8	65 1/2	19	4 3/8	52 1/8	23 7/16	184	199
60	69	9 7/8	10 3/8	71 1/2	21	4 3/8	57 13/32	24 9/16	198	213
72	81	10 1/4	10 3/4	83 1/2	25	4 3/8	67 31/32	27 1/4	213	228

45 deg. troughing training idler

5" dia. 72AHD544-BW

6" dia. 72AHD644-BW



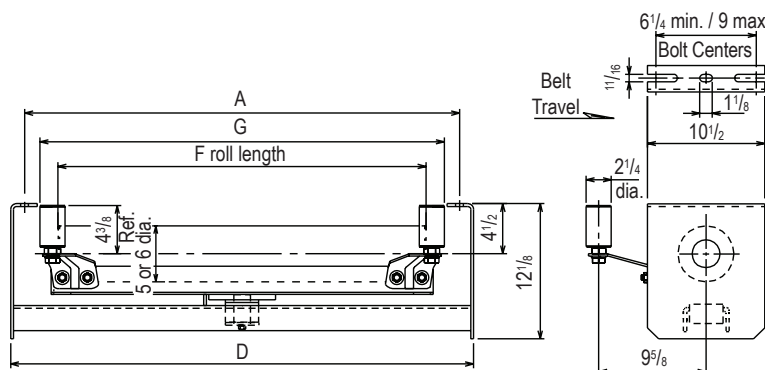
Troughing trainers for reversing service are also available. Consult factory.

Belt width	Reference dimensions								Wt. 5"	Wt. 6"
	A	C	D	E	F	G	H			
24										
30										
36										
42	51	9 1/2	10	53 1/2	15	4 1/8	37 3/8	22 3/32	152	166
48	57	9 7/8	10 3/8	59 1/2	17	4 1/8	42 1/16	24 1/2	174	189
54	63	9 7/8	10 3/8	65 1/2	19	4 3/8	46 7/8	25 15/16	187	202
60	69	9 7/8	10 3/8	71 1/2	21	4 3/8	51 11/16	27 5/16	200	215
72	81	10 1/4	10 3/4	83 1/2	25	4 3/8	61 1/16	30 1/2	215	230

Return training idler

5" dia. 72AHD519-BW

6" dia. 72AHD619-BW



Belt width	Reference dimensions					Wt. 5"	Wt. 6"
	A	D	F	G			
24	33	35 1/2	27	29 1/2	102	108	
30	39	41 1/2	33	36	121	128	
36	45	47 1/2	39	42	131	140	
42	51	53 1/2	45	48	142	151	
48	57	59 1/2	51	54	155	166	
54	63	65 1/2	57	60	172	184	
60	69	71 1/2	63	66	184	196	
72	81	83 1/2	75	78	198	210	

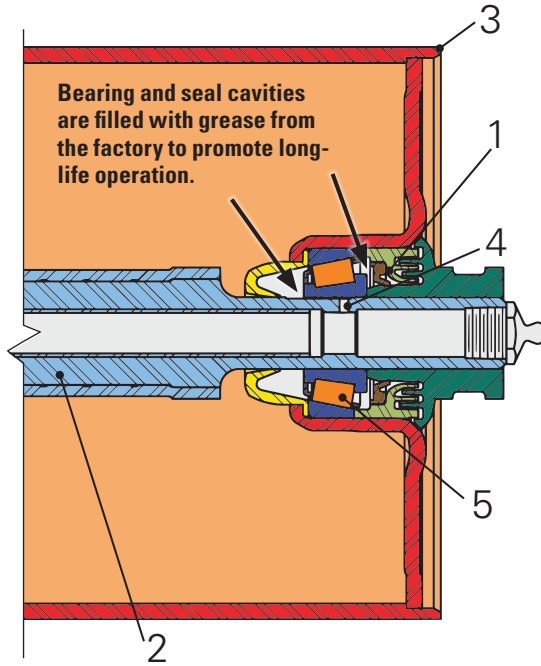
Bolts, nuts, and washers for mounting are not included. Weights are in pounds, and lengths are in inches. Weights and dimensions are subject to change or correction without notice. Use certified prints for construction purposes.

Modified geometry, 3/4" tapered roller bearing

H-Plus series regreasable

CEMA D

- 1. Combination lip and labyrinth seal** – A unique, precision die-cast nut, and triple horizontal labyrinth seal provide three baffles designed to keep contaminants out. The outer labyrinth is formed from mating parts, which provides a precise close tolerance seal. The lip seal contacts the precision zinc die-cast surface to provide increased seal integrity. Additionally, the threaded die-cast nut also provides an integral barrier against contamination.
- 2. *Patented shaft design** – Our patented multi-piece shaft design includes a hollow tube center section and shaft ends that are machined to 3/4" diameter. The center tube sections are sized for high-capacity applications. By design, these shafts increase load capacity by decreasing shaft deflection and bearing misalignment.
- 3. Counter-bored shell** – Counter-bored shell with protected weld contributes to proper bearing alignment.



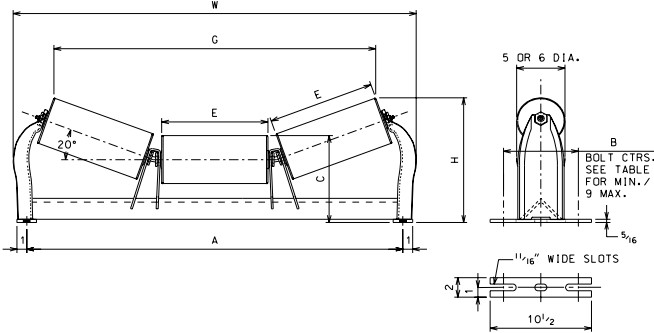
- 4. Relubrication system** – All bearings are positively greased from one fitting on either side. The compensating flats provide a metered grease path which equally distributes lubricant to each bearing cavity. The grease enters behind the bearing, purges through the bearing, through the seal, flushing the bearing cavity of old grease and any contamination. The purpose of the positive purge of the bearing cavity is to prevent excessive back pressure which may blow seals or lock rolls.
- 5. Modified geometry tapered roller bearings** – Modified geometry, 3/4" tapered roller bearings provide more bearing contact area than ball bearings. Spreading the load over a larger area relieves stress and enhances bearing life under heavy loads and impact.

*Available on all return rolls and all 42-inch belt width and wider troughing rolls.

20° troughing idler

5" dia. 78AH501-BW

6" dia. 78AH601-BW

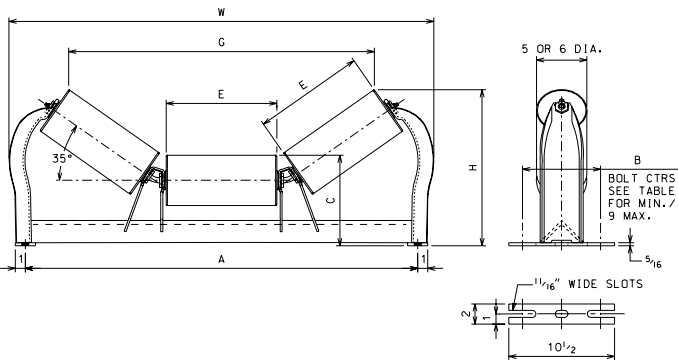


BW	A	B	C		E	G		H		W	Wt.	
			5" Dia.	6" Dia.		5" Dia.	6" Dia.	5"	6"			
24	33	6 1/4	8 5/8	9 1/8	9	27 5/8	27 1/4	11 7/8	12 5/16	35 3/8	60	72
30	39	6 1/4	9	9 1/2	11	33 3/8	33	12 15/16	13 3/8	41 3/4	66	78
36	45	6 1/4	9	9 1/2	13	39 3/8	38 3/4	13 5/8	14 3/16	47 9/16	75	90
42	51	6 1/4	9	9 1/2	15	44 7/8	44 9/16	14 1/4	14 3/4	53 5/16	83	98
48	57	7	9 3/8	9 7/8	17	50 5/8	50 5/16	15 5/8	15 3/16	59 5/16	103	118
54	63	7	9 3/8	9 7/8	19	56 3/8	56 1/16	16	16 1/2	65 1/16	112	127
60	69	7	9 3/8	9 7/8	21	62 1/8	61 13/16	16 11/16	17 3/16	70 13/16	122	136
66	75	7	9 3/4	10 1/4	23	68 1/16	67 11/16	17 3/4	18 1/4	74 1/2	133	147
72	81	7	9 3/4	10 1/4	25	73 13/16	73 7/16	18 1/16	18 5/16	82 7/8	145	159

35° troughing idler

5" dia. 78AH530-BW

6" dia. 78AH630-BW



BW	A	B	C		E	G		H		W	Wt.	
			5" Dia.	6" Dia.		5" Dia.	6" Dia.	5"	6"			
24	33	6 1/4	8 5/8	9 1/8	9	25 1/16	24 1/2	14	14 7/16	36 5/8	62	74
30	39	6 1/4	9	9 1/2	11	30 3/8	29 13/16	15 1/2	15 15/16	42 1/4	69	84
36	45	6 1/4	9	9 1/2	13	35 5/8	35 1/16	16 11/16	17 1/16	47 13/16	78	93
42	51	6 1/4	9	9 1/2	15	40 15/16	40 5/16	17 13/16	18 1/4	53 3/16	86	101
48	57	7	9 3/8	9 7/8	17	46 3/16	45 5/8	19 5/16	19 3/4	59 1/2	107	122
54	63	7	9 3/8	9 7/8	19	51 7/16	50 7/8	20 1/2	20 7/8	65	117	131
60	69	7	9 3/8	9 7/8	21	56 3/4	56 3/16	21 5/8	22 1/16	70 1/2	127	142
66	75	7	9 3/4	10 1/4	23	62 1/8	61 9/16	23 3/16	23 3/16	75 7/8	138	153
72	81	7	9 3/4	10 1/4	25	67 5/16	66 3/4	24 5/16	24 11/16	82 3/4	150	165

Add S to part number for sealed construction. Add G to part number for regreasable construction. Weights and dimensions are subject to change or correction without notice. Use certified prints for construction purposes. Bolts, nuts, and washers for mounting are not included. Weights are in pounds, and lengths are in inches.

Tapered roller bearing

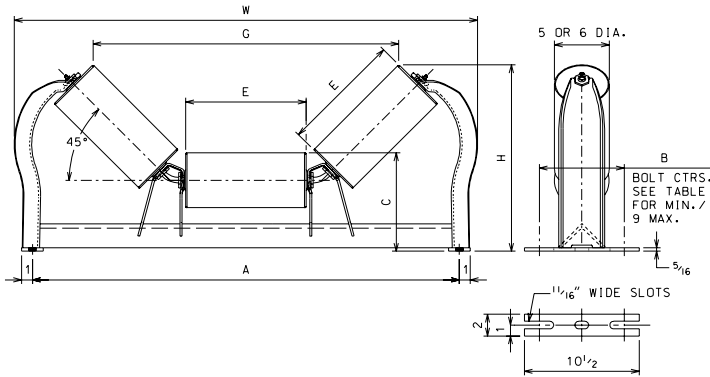
H-Plus series

CEMA D

45° troughing idler

5" dia. 78AH542-BW

6" dia. 78AH642-BW

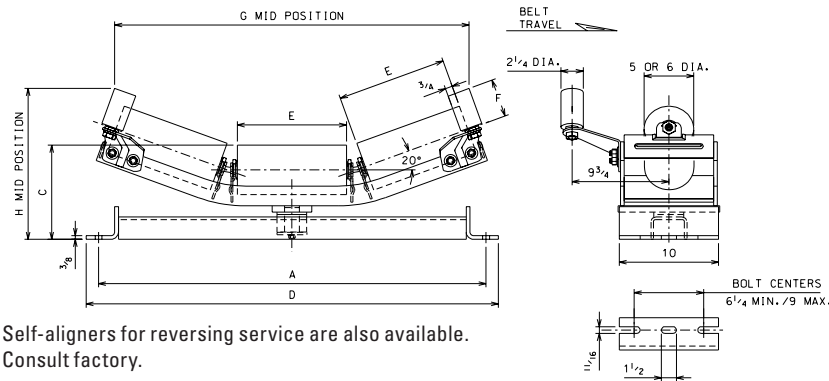


BW	A	B	C		E	G		H		W	Wt.	
			5" Dia.	6" Dia.		5" Dia.	6" Dia.	5" Dia.	6" Dia.		5"	6"
24	33	6 1/4	8 5/8	9 1/8	9	23 3/8	22 3/8	15 1/4	15 3/8	35	65	77
30	39	6 1/4	9	9 1/2	11	27 15/16	27 1/4	17 1/16	17 1/16	41	74	89
36	45	6 1/4	9	9 1/2	13	32 3/4	32 1/16	18 1/2	18 13/16	46 3/4	83	98
42	51	6 1/4	9	9 1/2	15	37 9/16	36 7/8	19 3/8	20 1/4	52 3/4	93	107
48	57	7	9 3/8	9 3/8	17	42 7/16	41 11/16	21 11/16	22 1/16	59 1/2	110	125
54	63	7	9 3/8	9 3/8	19	47 1/4	46 9/16	23 3/8	23 1/16	64 3/4	119	128
60	69	7	9 3/8	9 3/8	21	52 1/16	51 5/8	24 1/2	24 3/8	70	130	145
66	75	7	9 3/4	10 1/4	23	57 5/8	56 1/16	26 3/16	26 11/16	74 11/16	141	156
72	81	7	9 3/4	10 1/4	25	61 13/16	61 1/8	27 3/4	28 3/8	77 9/16	153	168

20° S/A troughing idler

5" dia. 78AH503-BW

6" dia. 78AH603-BW



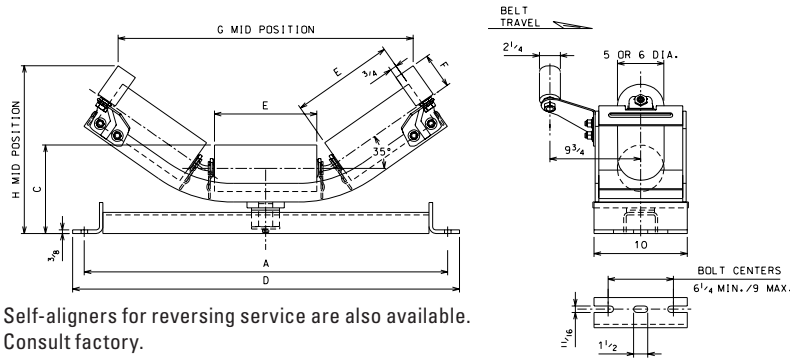
BW	A	C		D	E	F	G	H	Wt.	
		5" Dia.	6" Dia.						5"	6"
24	33	9 1/8	9 3/8	35 1/2	9	4 1/8	29 3/4	14 7/16	101	113
30	39	9 1/2	10	41 1/2	11	4 1/8	35 1/2	15 1/16	123	133
36	45	9 1/2	10	47 1/2	13	4 1/8	41 1/4	16 1/8	137	152
42	51	9 1/2	10	53 1/2	15	4 1/8	47	16 13/16	146	161
48	57	9 3/8	10 3/8	59 1/2	17	4 3/8	52 3/4	18 1/8	165	180
54	63	9 3/8	10 3/8	65 1/2	19	4 3/8	58 5/8	18 13/16	183	198
60	69	9 3/8	10 3/8	71 1/2	21	4 3/8	64 1/16	19 1/2	196	211
72	81	10 1/4	10 3/4	83 1/2	25	4 3/8	75 5/16	21 1/4	211	226

Self-aligners for reversing service are also available. Consult factory.

35° S/A troughing idler

127 mm 5" dia. 78AH532-BW

152 mm 6" dia. 78AH632-BW



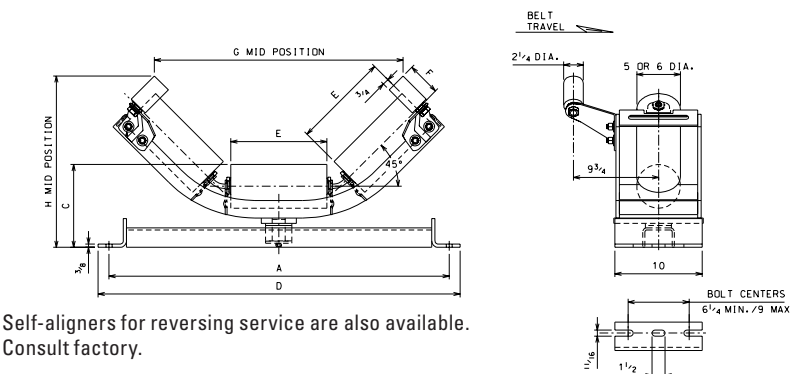
BW	A	C		D	E	F	G	H	Wt.	
		5" Dia.	6" Dia.						5"	6"
24	33	9 1/8	9 5/8	35 1/2	9	4 1/8	26 3/32	16 3/4	108	116
30	39	9 1/2	10	41 1/2	11	4 1/8	31 5/16	18 9/32	126	134
36	45	9 1/2	10	47 1/2	13	4 1/8	36 19/32	19 1/16	138	153
42	51	9 1/2	10	53 1/2	15	4 1/8	41 7/8	20 19/32	150	166
48	57	9 3/8	10 3/8	59 1/2	17	4 1/8	47 1/8	22 3/32	176	187
54	63	9 3/8	10 3/8	65 1/2	19	4 3/8	52 1/8	23 1/16	184	199
60	69	9 3/8	10 3/8	71 1/2	21	4 3/8	57 13/32	24 3/16	198	213
72	81	10 1/4	10 3/4	83 1/2	25	4 3/8	67 31/32	27 1/4	213	228

Self-aligners for reversing service are also available. Consult factory.

45° S/A troughing idler

127 mm 5" dia. 78AH544-BW

152 mm 6" dia. 78AH644-BW



BW	A	C		D	E	F	G	H	Wt.	
		5" Dia.	6" Dia.						5"	6"
24	33	9 1/8	9 5/8	35 1/2	9	4 1/8	23 3/16	17 1/2	109	118
30	39	9 1/2	10	41 1/2	11	4 1/8	27 3/4	19 9/32	123	136
36	45	9 1/2	10	47 1/2	13	4 1/8	32 3/16	20 11/16	140	155
42	51	9 1/2	10	53 1/2	15	4 1/8	37 3/8	22 3/32	152	166
48	57	9 3/8	10 3/8	59 1/2	17	4 1/8	42 1/16	24 1/2	174	189
54	63	9 3/8	10 3/8	65 1/2	19	4 3/8	46 3/8	25 15/16	187	202
60	69	9 3/8	10 3/8	71 1/2	21	4 3/8	51 11/16	27 3/16	200	215
72	81	10 1/4	10 3/4	83 1/2	25	4 3/8	61 5/16	30 1/2	215	230

Self-aligners for reversing service are also available. Consult factory.

Add S to part number for sealed construction. Add G to part number for regreaseable construction. Weights and dimensions are subject to change or correction without notice. Use certified prints for construction purposes. Bolts, nuts, and washers for mounting are not included. Weights are in pounds, and lengths are in inches.

Tapered roller bearing

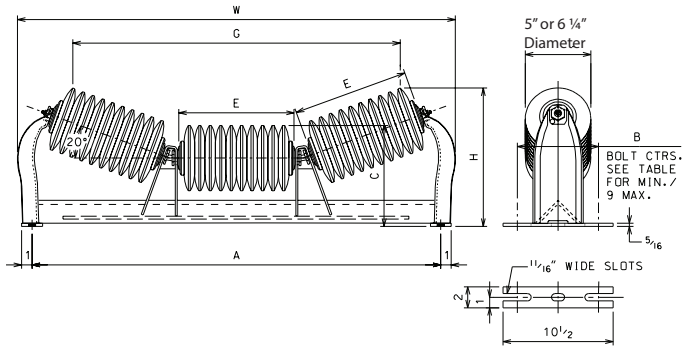
H-Plus series

CEMA D

20° impact troughing idler

5" dia. 78AH502-BW

6 1/4" dia. 78AH602-BW

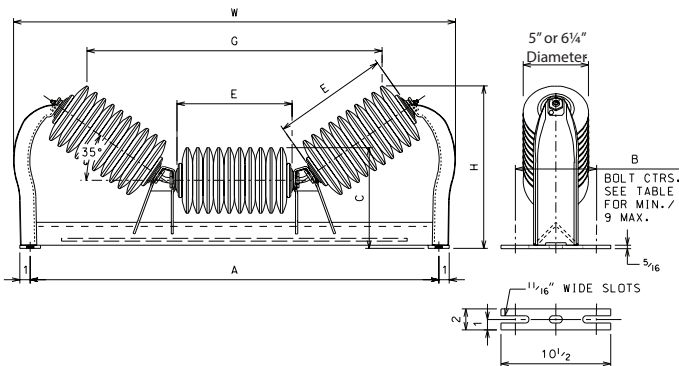


BW	A	B	C		E	G		H		W	Wt.	
			5"	6 1/4"		5"	6 1/4"	5"	6 1/4"			
24	33	6 1/4	8 5/8	9 1/4	9	25 3/4	25 1/4	11 9/16	12 1/16	35 5/8	68	74
30	39	6 1/4	9	9 5/8	11	31 1/2	31	12 5/8	13 1/8	41 3/4	83	92
36	45	6 1/4	9	9 5/8	13	37 1/4	36 3/4	13 5/16	13 13/16	47 9/16	95	107
42	51	6 1/4	9	9 5/8	15	43	42 1/2	13 15/16	14 1/2	53 5/16	113	122
48	57	7	9 3/8	10	17	48 3/4	48 1/4	15	15 9/16	59 5/16	136	148
54	63	7	9 3/8	10	19	54 1/2	54	15 11/16	16 1/4	65 1/16	155	167
60	69	7	9 3/8	10	21	60 1/4	59 3/4	16 3/8	16 15/16	70 13/16	168	183
72	81	7	9 3/4	10 3/8	25	71 3/4	71 1/2	18 1/8	18 11/16	82 7/8	183	198

35° impact troughing idler

5" dia. 78AH536-BW

6 1/4" dia. 78AH636-BW

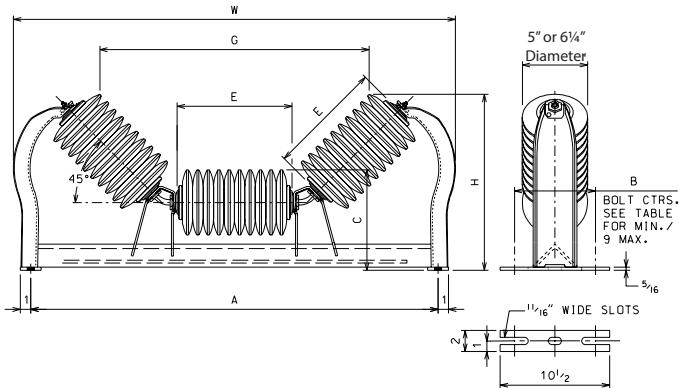


BW	A	B	C		E	G		H		W	Wt.	
			5"	6 1/4"		5"	6 1/4"	5"	6 1/4"			
24	33	6 1/4	8 5/8	9 1/4	9	23 1/2	22 11/16	13 3/8	13 15/16	36 5/8	70	76
30	39	6 1/4	9	9 5/8	11	28 13/16	28	14 7/8	15 7/16	42 1/4	85	94
36	45	6 1/4	9	9 5/8	13	34 1/16	33 1/4	16	16 9/16	47 13/16	98	110
42	51	6 1/4	9	9 5/8	15	39 3/8	38 9/16	17 3/16	17 3/4	53 3/16	116	125
48	57	7	9 3/8	10	17	44 5/8	43 13/16	18 11/16	19 1/4	59 1/2	140	152
54	63	7	9 3/8	10	19	49 7/8	49 1/16	19 13/16	20 3/8	65	160	172
60	69	7	9 3/8	10	21	55 3/16	54 3/8	21	21 9/16	70 1/2	175	190
72	81	7	9 3/4	10 3/8	25	65 3/4	65 1/8	23 5/8	24 3/16	82 3/4	190	205

45° impact troughing idler

5" dia. 78AH548-BW

6 1/4" dia. 78AH648-BW

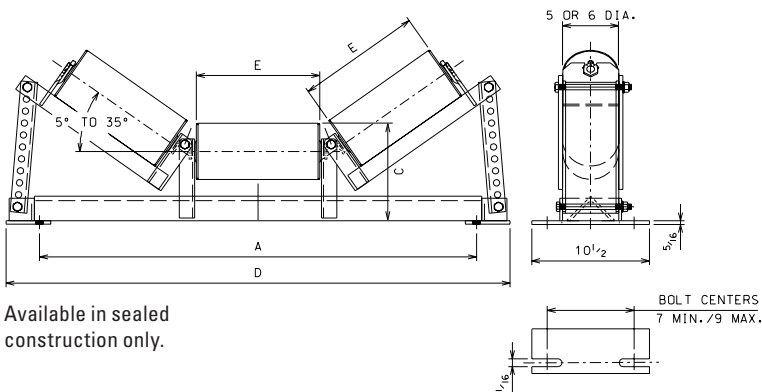


BW	A	B	C		E	G		H		W	Wt.	
			5"	6 1/4"		5"	6 1/4"	5"	6 1/4"			
24	33	6 1/4	8 5/8	9 1/4	9	21 3/4	20 3/4	14 9/16	15	35	74	80
30	39	6 1/4	9	9 5/8	11	26 9/16	25 9/16	16 5/16	16 3/4	41	90	99
36	45	6 1/4	9	9 5/8	13	31 3/8	30 3/8	17 3/4	18 3/16	46 3/4	103	115
42	51	6 1/4	9	9 5/8	15	36 3/16	35 3/16	19 3/16	19 5/8	52 3/4	122	131
48	57	7	9 3/8	10	17	41 1/16	40 1/16	20 15/16	21 3/8	59 1/2	139	151
54	63	7	9 3/8	10	19	45 7/8	44 7/8	22 3/8	22 13/16	64 3/4	163	175
60	69	7	9 3/8	10	21	50 11/16	49 11/16	23 13/16	24 1/4	70	177	192
72	81	7	9 3/4	10 3/8	25	60 3/8	59 3/8	27 1/16	27 1/2	77 9/16	195	210

Transition idler

5" dia. 78AH559-BW

6" dia. 78AH659-BW



Available in sealed construction only.

BW	A	C		D	E	Wt.	Wt.
		5" Dia.	6" Dia.				
24	33	8 5/8	9 1/4	39	9	82	92
30	39	9	9 1/2	45	11	94	105
36	45	9	9 1/2	51	13	103	115
42	51	9	9 1/2	57	15	113	127
48	57	9 3/8	9 3/8	63	17	132	147
54	63	9 3/8	9 3/8	69	19	142	158
60	69	9 3/8	9 3/8	75	21	152	170
66	75	9 3/4	10 1/4	81	23	168	187
72	81	9 3/4	10 1/4	87	25	178	198

Add S to part number for sealed construction. Add G to part number for regreasable construction. Weights are in pounds, and lengths are in inches. Bolts, nuts, and washers for mounting are not included. Weights and dimensions are subject to change or correction without notice. Use certified prints for construction purposes.

Tapered roller bearing

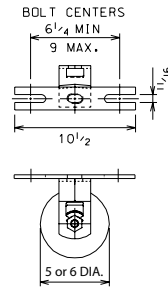
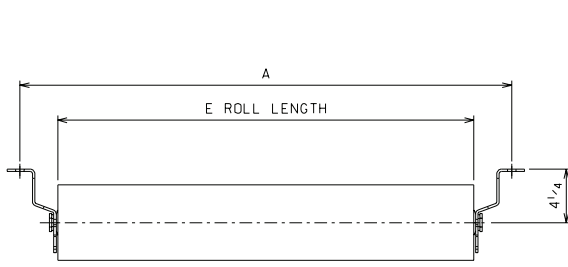
H-Plus series

CEMA D

Return roll

5" dia. 78AH589-E

6" dia. 78AH688-E



Part numbers are for regreasable construction.

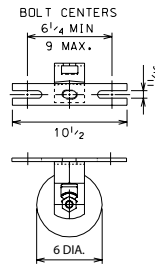
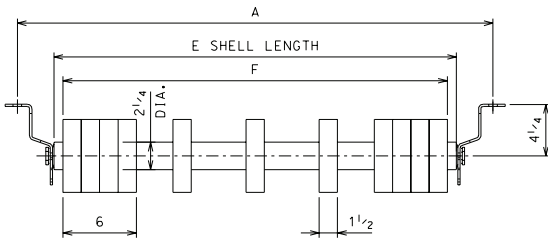
Consult factory for sealed return idler part numbers.

BW	A	E	Wt.	
			5"	6"
24	33	27	33	39
30	39	33	37	44
36	45	39	41	50
42	51	45	46	55
48	57	51	51	61
54	63	57	54	67
60	69	63	60	75
66	75	69	67	82
72	81	75	75	90

Drop brackets sold separately. Return idlers are shown above with 4 1/4" drop brackets. When ordering return idlers, specify two brackets no. 72A3602 per roll. Other drop brackets are available, please consult factory. Part number and weight applies to roll only. Rolls and brackets shipped separately. Add 4 lbs. per bracket.

Rubber disc return roll

6" dia. 78AH612-BW



Standard rubber disc return shown. Also available with 5" diameter rubber discs. Consult factory.

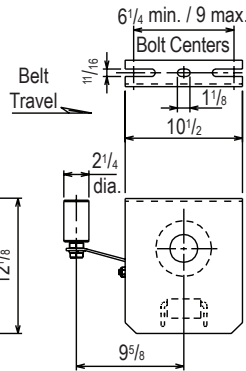
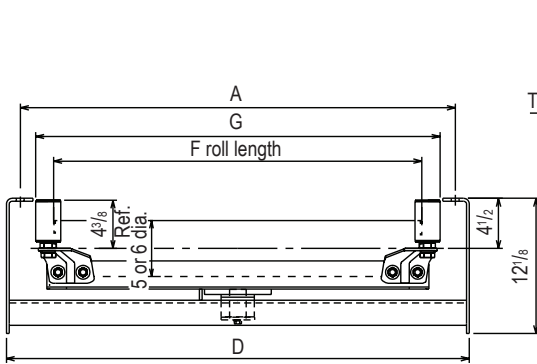
BW	A	E	F	#DISCS	Wt.
24	33	27	25 1/2	10	39
30	39	33	31 1/2	11	45
36	45	39	37 1/2	12	51
42	51	45	43 1/2	13	57
48	57	51	49 1/2	14	63
54	63	57	55 1/2	15	69
60	69	63	61 1/2	16	76
66	75	69	67 1/2	17	82
72	81	75	73 1/2	18	90

Drop brackets sold separately. Return idlers are shown above with 4 1/4" drop brackets. When ordering return idlers, specify two brackets no. 72A3602 per roll. Other drop brackets are available, please consult factory. Part number and weight applies to roll only. Rolls and brackets shipped separately. Add 4 lbs. per bracket.

Self-aligning return idler

5" dia. 78AH519-BW

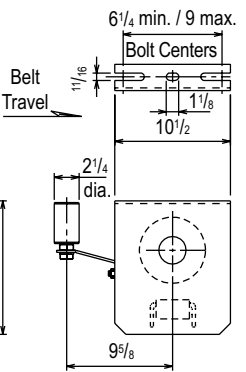
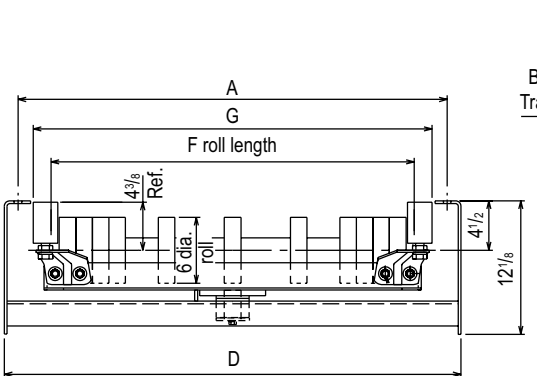
6" dia. 78AH619-BW



BW	A	D	F	G	Wt.	
					5"	6"
24	33	35 1/2	27	29 1/2	102	108
30	39	41 1/2	33	36	121	128
36	45	47 1/2	39	42	131	140
42	51	53 1/2	45	48	142	151
48	57	59 1/2	51	54	155	166
54	63	65 1/2	57	60	172	184
60	69	71 1/2	63	66	184	196
72	81	83 1/2	75	78	198	210

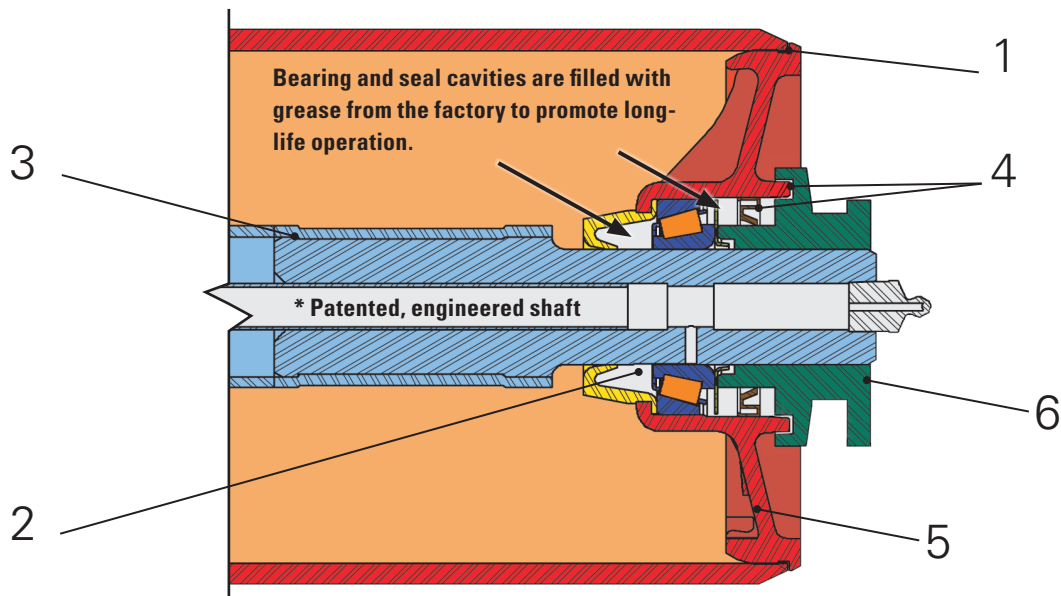
Self-aligning rubber disc return idler

6" dia. 78AH621-BW



BW	A	D	F	G	Wt.
24	33	35 1/2	27	29 1/2	108
30	39	41 1/2	33	36	128
36	45	47 1/2	39	42	140
42	51	53 1/2	45	48	151
48	57	59 1/2	51	54	166
54	63	65 1/2	57	60	184
60	69	71 1/2	63	66	196
72	81	83 1/2	75	78	210

Add S to part number for sealed construction. Add G to part number for regreasable construction. Weights are in pounds, and lengths are in inches. Bolts, nuts, and washers for mounting are not included. Weights and dimensions are subject to change or correction without notice. Use certified prints for construction purposes.



* Available on all return rolls and on 42-inch belt width and wider troughing rolls

The secrets of SDX-2200 superiority

1. Groove-lock connection of machined head and tube

Heads are press fit into the roll and positively locked into position by means of our unique groove-lock design. This approach provides a truly concentric, scale-quality roll assembly.

2. Relubrication system

All bearings are positively greased from one fitting on either side. The compensating flats provide a metered grease path which equally distributes lubricant to each bearing cavity. The grease enters behind the bearing, purges through the bearing, through the seal, flushing the bearing cavity of old grease and any contamination. The purpose of the positive purge of the bearing cavity is to prevent excessive back pressure which may blow seals or lock rolls.

3. Patented shaft design

Our patented multi-piece shaft design includes a hollow tube center section and solid shaft ends that are machined to 1 1/4" diameter. The center tube sections are sized for high-capacity applications. By design, these shafts increase load capacity by decreasing shaft deflection and bearing misalignment.

4. Combination lip and labyrinth seal

The combination of a labyrinth seal and a contact lip seal filled with grease has proven for decades to be the most effective seal for heavy-duty service. The outer labyrinth is formed from mating machined ductile parts which contributes to a precise, close tolerance seal. The lip seal contacts a burnished mirror finish surface to provide increased seal integrity.

5. Roll head

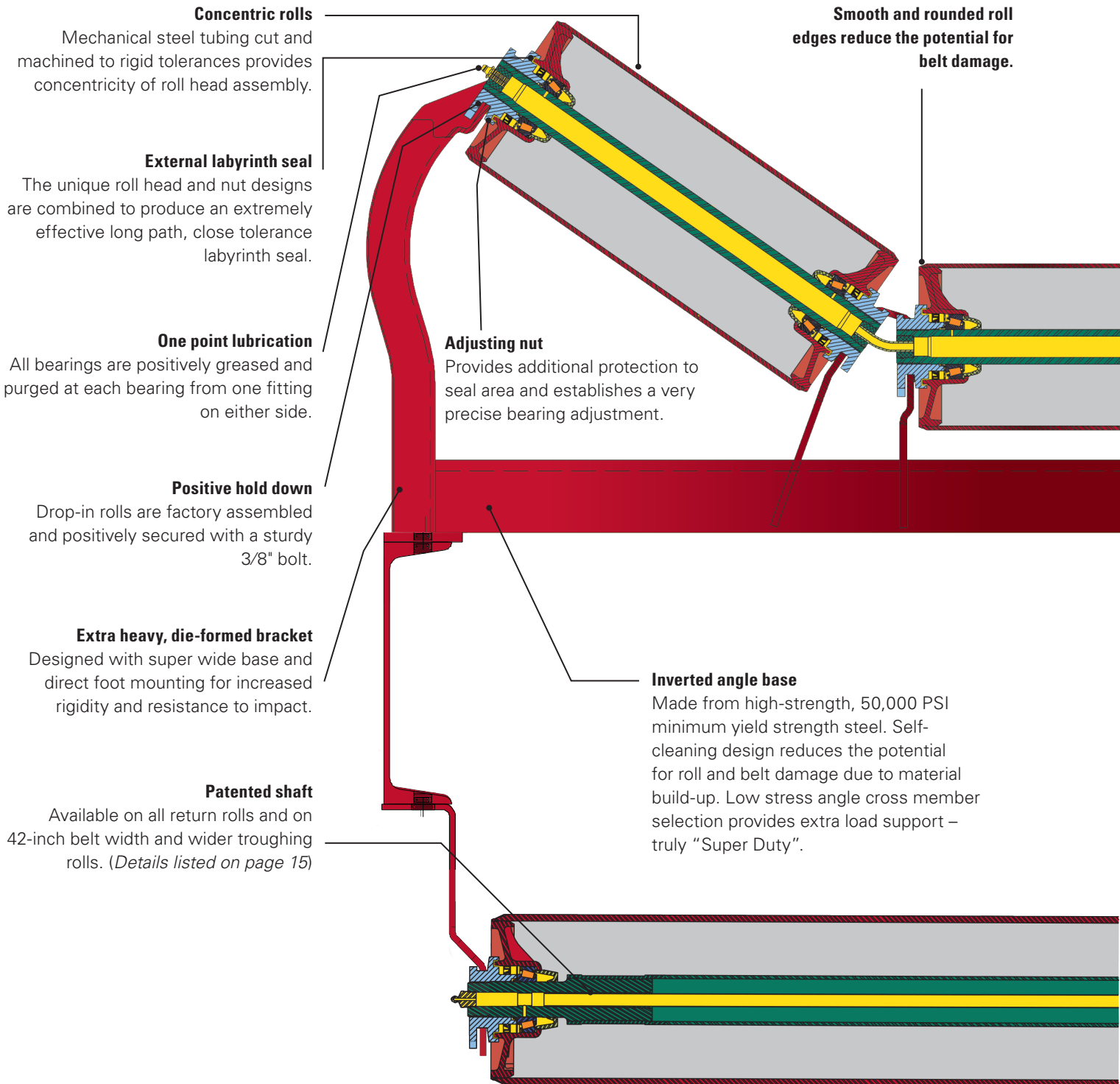
The SDX-2200 idler roll head is a heavy section, web-reinforced, ductile casting that is precision-machined for accurate roll and bearing fit.

6. Adjusting nut

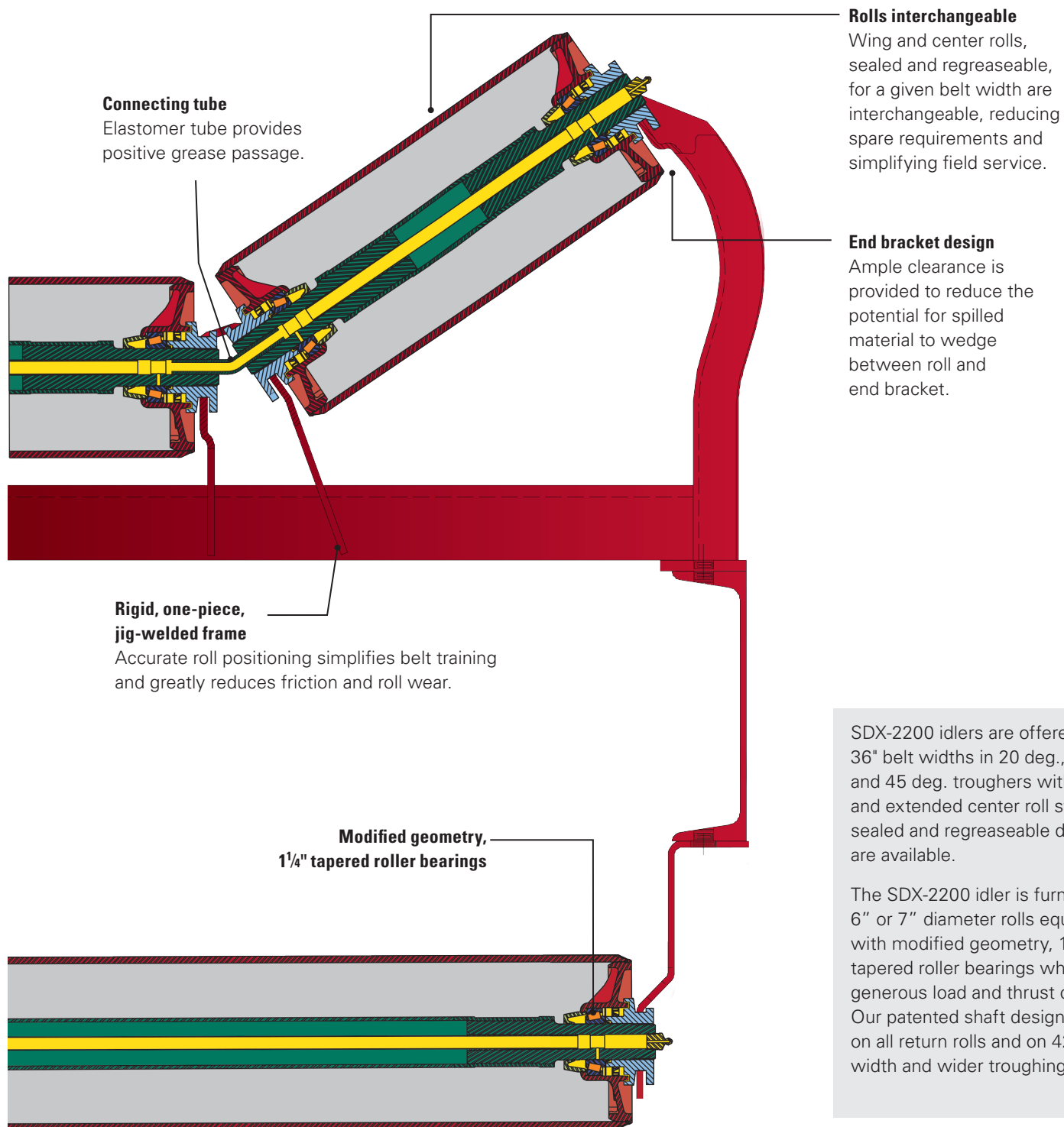
The SDX-2200 idler roll adjusting nut is a heavy section, ductile casting that is precision-machined for accurate roll and bearing fit. The adjusting nut establishes a very precise bearing adjustment and smooth surface for the contact lip seal.

SDX-2200

Super-duty belt conveyor idlers



Roll construction for 36-inch belt widths



Rolls interchangeable

Wing and center rolls, sealed and regreaseable, for a given belt width are interchangeable, reducing spare requirements and simplifying field service.

End bracket design

Ample clearance is provided to reduce the potential for spilled material to wedge between roll and end bracket.

Connecting tube

Elastomer tube provides positive grease passage.

Rigid, one-piece, jig-welded frame

Accurate roll positioning simplifies belt training and greatly reduces friction and roll wear.

Modified geometry, 1 1/4" tapered roller bearings

SDX-2200 idlers are offered from 36" belt widths in 20 deg., 35 deg., and 45 deg. troughers with equal and extended center roll styles. Both sealed and regreaseable designs are available.

The SDX-2200 idler is furnished with 6" or 7" diameter rolls equipped with modified geometry, 1 1/4" tapered roller bearings which provide generous load and thrust capacities. Our patented shaft design is available on all return rolls and on 42-inch belt width and wider troughing rolls.

Roll construction for 42-inch and wider belt widths

Tapered roller bearing

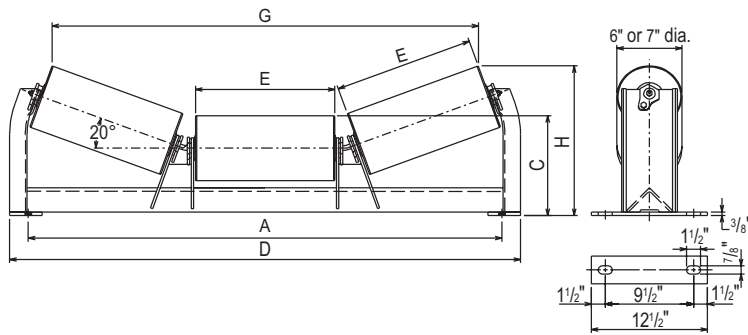
SDX-2200 series

CEMA E

20° troughing idler

6" dia. 73ASDX601-BW

7" dia. 73ASDX701-BW

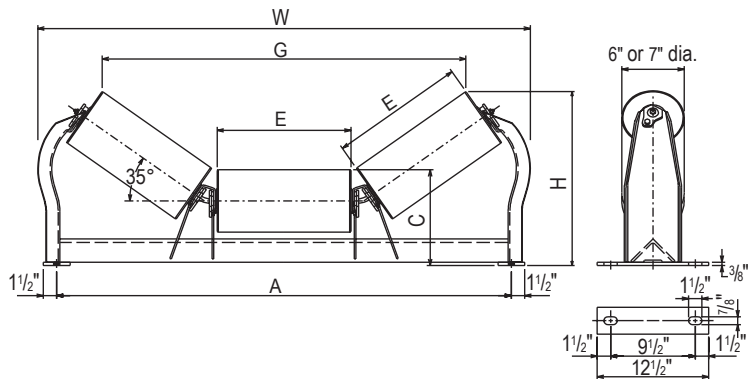


BW	A	C		D	E	G		H		Wt.	
		6" Dia.	7" Dia.			6" Dia.	7" Dia.	6" Dia.	7" Dia.	6"	7"
36	45	10 1/4	10 3/4	50	13	40 1/2	40 3/8	15	15 1/16	137	162
42	51	10 1/4	10 3/4	55	15	46 1/4	45 3/8	15 3/8	16 1/8	147	176
48	57	10 1/4	10 3/4	63	17 3/4	54 3/8	53 13/16	16 3/8	17 1/8	172	197
54	63	10 3/8	11 1/8	69	19 3/4	59 15/16	59 3/8	17 3/8	18 1/8	190	229
60	69	10 3/8	11 1/8	75	21 3/4	65 3/4	65 5/8	18 3/8	18 3/8	203	246
66	75	11 1/16	11 13/16	81	23 3/4	71 1/16	71 1/16	19 1/16	20 3/16	229	275
72	81	11 1/16	11 13/16	87	25 3/4	77 3/16	76 3/8	20 3/8	20 3/8	243	294
78	87	11 3/16	11 13/16	93	27 3/4	82 15/16	82 3/8	21 1/16	21 1/16	256	310
84	93	12	12 1/2	98	29 3/4	88 1/16	88 3/8	22 1/16	22 1/16	303	360
96	105	12	12 1/2	110	33 3/4	100 1/4	99 3/8	23 1/16	24 3/16	337	400

35° troughing idler

6" dia. 73ASDX630-BW

7" dia. 73ASDX730-BW

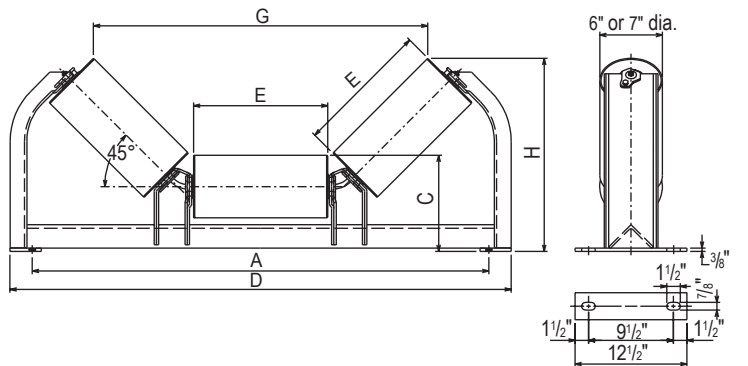


BW	A	C		E	G		H		W	Wt.	
		6" Dia.	7" Dia.		6" Dia.	7" Dia.	6" Dia.	7" Dia.		6"	7"
36	45	10 1/4	10 3/4	13	35 3/8	35 3/8	17 15/16	18 3/8	50 3/8	132	158
42	51	10 1/4	10 3/4	15	41 3/16	40 3/8	19 1/16	19 1/2	55 3/8	145	174
48	57	10 1/4	10 3/4	17 3/4	48 7/16	47 13/16	20 3/8	21 1/8	62 3/8	166	200
54	63	10 3/8	11 1/8	19 3/4	53 13/16	53 3/8	22 3/16	22 3/8	67 3/4	184	222
60	69	10 3/8	11 1/8	21 3/4	58 15/16	58 3/8	23 3/16	23 3/4	73	196	238
66	75	11 1/16	11 13/16	23 3/4	64 3/4	63 11/16	25 3/8	25 3/8	78 3/4	222	267
72	81	11 1/16	11 13/16	25 3/4	69 1/2	68 15/16	26 3/8	26 1/8	83 3/2	234	285
78	87	11 3/16	11 13/16	27 3/4	74 13/16	74 1/4	27 3/16	27 3/8	88 3/4	247	301
84	93	12	12 1/2	29 3/4	80 1/16	79 1/2	29 3/8	29 1/8	94 3/8	294	351
96	105	12	12 1/2	33 3/4	90 3/8	90 1/16	31 3/16	31 1/8	105 1/16	328	391

45° troughing idler

6" dia. 73ASDX642-BW

7" dia. 73ASDX742-BW

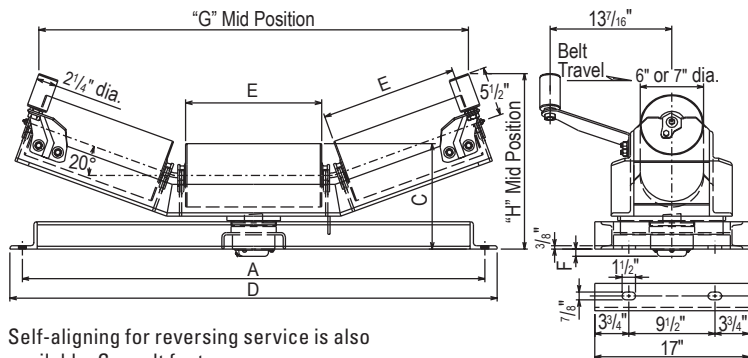


BW	A	C		D	E	G		H		Wt.	
		6" Dia.	7" Dia.			6" Dia.	7" Dia.	6" Dia.	7" Dia.	6"	7"
36	45	10 1/4	10 3/4	51	13	33 3/16	32 1/2	19 13/16	20 3/16	146	172
42	51	10 1/4	10 3/4	56	15	38 3/16	37 3/8	21 1/4	21 1/8	160	189
48	57	10 1/4	10 3/4	63	17 3/4	44 1/16	44	23 3/16	23 3/8	185	219
54	63	10 3/8	11 1/8	68	19 3/4	49 1/2	48 13/16	24 13/16	25 3/16	202	240
60	69	10 3/8	11 1/8	73	21 3/4	54 3/8	53 3/8	26 3/8	26 3/4	213	256
66	75	11 1/16	11 13/16	79	23 3/4	59 3/16	58 1/2	28 1/2	28 13/16	239	284
72	81	11 1/16	11 13/16	84	25 3/4	64 1/16	63 3/16	29 3/8	30 1/4	255	306
78	87	11 3/16	11 13/16	90	27 3/4	68 13/16	68 3/8	31 1/16	31 1/8	268	322
84	93	12	12 1/2	96	29 3/4	73 1/16	72 13/16	33 3/16	33 3/4	315	372
96	105	12	12 1/2	107	33 3/4	83 3/16	82 3/8	36 1/4	36 3/8	349	412

20° S/A troughing idler

6" dia. 73ASDX603-BW

7" dia. 73ASDX703-BW



Self-aligning for reversing service is also available. Consult factory.

BW	A	C		D	E	F	G	H	Wt.	
		6" Dia.	7" Dia.						6"	7"
36	45	11 1/8	11 5/8	47 3/4	13	1 3/16	41 1/16	18 11/16	225	250
42	51	11 1/8	11 5/8	53 3/4	15	1 3/16	47 1/4	19 3/8	242	271
48	57	11 1/8	11 5/8	59 3/4	17 3/4	1 3/16	54 1/16	20 1/4	266	301
54	63	11 1/2	12	65 3/4	19 3/4	7/16	60 3/16	21 3/8	306	344
60	69	11 1/2	12	71 3/4	21 3/4	7/16	66 3/16	22	325	367
66	75	12 3/16	12 11/16	77 3/4	23 3/4	0	71 1/16	23 3/8	363	408
72	81	12 3/16	12 11/16	83 3/4	25 3/4	0	77 3/4	24	382	431
78	87	12 3/16	12 11/16	89 3/4	27 3/4	0	83 3/4	24 3/4	401	454
84	93	12 3/16	12 11/16	95 3/4	29 3/4	0	89 3/4	25 3/8	420	477
96	105	12 3/16	12 11/16	107 3/4	33 3/4	0	100 3/4	26 3/4	458	523

Add S to part number for sealed construction. Add G to part number for regreasable construction. Weights are in pounds, and lengths are in inches. Bolts, nuts, and washers for mounting are not included. Weights and dimensions are subject to change or correction without notice. Use certified prints for construction purposes.

Tapered roller bearing

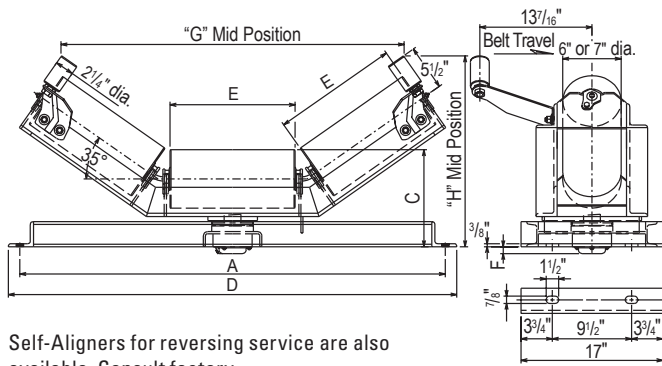
SDX-2200 series

CEMA E

35° S/A troughing idler

6" dia. 73ASDX632-BW

7" dia. 73ASDX732-BW



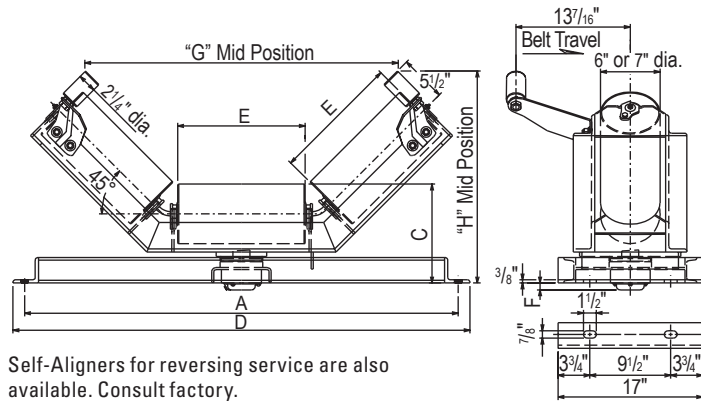
Self-Aligners for reversing service are also available. Consult factory.

BW	A	C		D	E	F	G	H	Wt.	
		6" Dia.	7" Dia.						6"	7"
36	45	11 1/8	11 5/8	47 3/4	13	13/16	35 9/16	21 3/4	228	253
42	51	11 1/8	11 5/8	53 3/4	15	13/16	40 13/16	22 7/8	246	275
48	57	11 1/8	11 5/8	59 3/4	17 3/4	13/16	47 11/16	24 5/16	270	305
54	63	11 1/2	12	65 3/4	19 3/4	7/16	53	25 7/8	310	348
60	69	11 1/2	12	71 3/4	21 3/4	7/16	58 1/4	27	329	371
66	75	12 3/16	12 11/16	77 3/4	23 3/4	0	63 1/2	28 13/16	367	412
72	81	12 3/16	12 11/16	83 3/4	25 3/4	0	68 13/16	30	386	435
78	87	12 3/16	12 11/16	89 3/4	27 3/4	0	74 1/16	31 1/8	405	458
84	93	12 3/16	12 11/16	95 3/4	29 3/4	0	79 3/8	32 5/16	424	481
96	105	12 3/16	12 11/16	107 3/4	33 3/4	0	89 7/8	34 9/16	462	527

45° S/A troughing idler

6" dia. 73ASDX644-BW

7" dia. 73ASDX744-BW

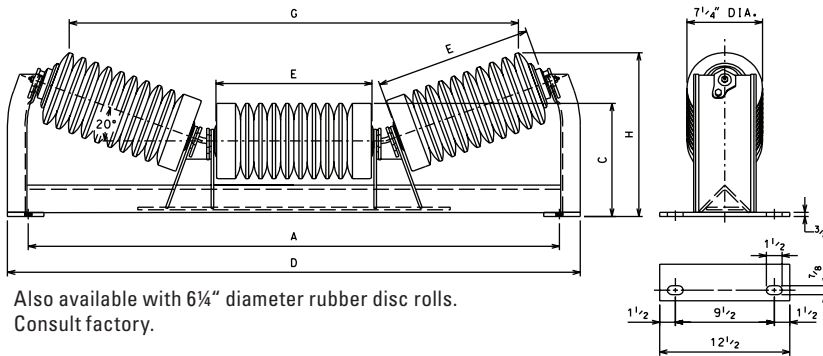


Self-Aligners for reversing service are also available. Consult factory.

BW	A	C		D	E	F	G	H	Wt.	
		6" Dia.	7" Dia.						6"	7"
36	45	11 1/8	11 5/8	47 3/4	13	13/16	31 11/16	23 1/2	231	256
42	51	11 1/8	11 5/8	53 3/4	15	13/16	36 1/2	24 15/16	249	278
48	57	11 1/8	11 5/8	59 3/4	17 3/4	13/16	42 13/16	26 11/16	273	308
54	63	11 1/2	12	65 3/4	19 3/4	7/16	47 5/8	28 1/2	313	351
60	69	11 1/2	12	71 3/4	21 3/4	7/16	52 1/2	29 7/8	331	374
66	75	12 3/16	12 11/16	77 3/4	23 3/4	0	57 5/16	32	369	415
72	81	12 3/16	12 11/16	83 3/4	25 3/4	0	62 1/8	33 3/8	389	438
78	87	12 3/16	12 11/16	89 3/4	27 3/4	0	66 15/16	34 13/16	408	461
84	93	12 3/16	12 11/16	95 3/4	29 3/4	0	71 13/16	36 1/4	427	484
96	105	12 3/16	12 11/16	107 3/4	33 3/4	0	81 1/16	39 1/16	465	530

20° impact troughing idler

7 1/4" dia. 73ASDX702-BW

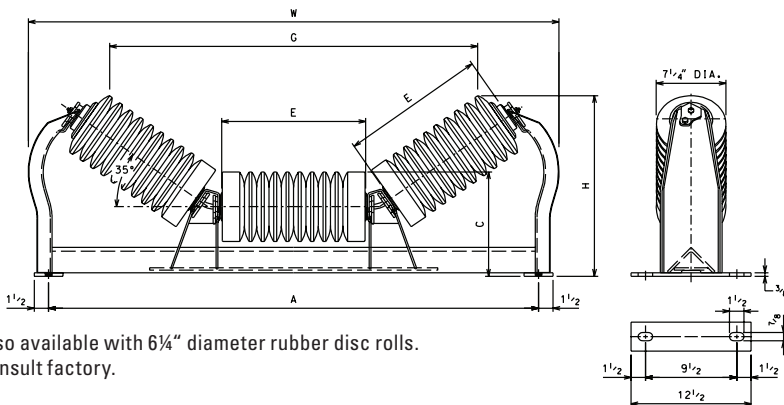


Also available with 6 1/4" diameter rubber disc rolls. Consult factory.

BW	A	C	D	E	G	H	Wt.
36	45	10 7/8	50	12 3/4	37 3/8	15 1/16	180
42	51	10 7/8	55	14 3/4	43 1/8	15 3/4	198
48	57	10 7/8	63	17 1/2	51 1/16	16 11/16	233
54	63	11 1/4	69	19 1/2	56 13/16	17 3/4	260
60	69	11 1/4	75	21 1/2	62 3/16	18 5/16	285
66	75	11 15/16	81	23 1/2	68 5/16	19 3/16	315
72	81	11 15/16	87	25 1/2	74 1/16	20 1/2	348
78	87	11 15/16	93	27 1/2	79 7/8	21 3/16	380
84	93	12 5/8	98	29 1/2	85 5/8	22 3/16	429
96	105	12 5/8	109	33 1/2	97 1/8	23 5/16	477

35° impact troughing idler

7 1/4" dia. 73ASDX736-BW



Also available with 6 1/4" diameter rubber disc rolls. Consult factory.

BW	A	C	E	G	H	W	Wt.
36	45	10 7/8	12 3/4	32 7/8	17 5/8	50 3/4	176
42	51	10 7/8	14 3/4	38 1/16	18 3/4	55 7/8	196
48	57	10 7/8	17 1/2	45 7/16	20 5/16	62 3/8	226
54	63	11 1/4	19 1/2	50 11/16	21 7/8	67 3/4	253
60	69	11 1/4	21 1/2	56	23	73	278
66	75	11 15/16	23 1/2	61 1/4	24 13/16	78 1/4	308
72	81	11 15/16	25 1/2	66 1/2	26	83 1/2	339
78	87	11 15/16	27 1/2	71 13/16	27 1/8	88 3/4	371
84	93	12 5/8	29 1/2	77 1/16	28 15/16	94 1/8	421
96	105	12 5/8	33 1/2	87 1/2	31 1/4	105 5/16	469

Add S to part number for sealed construction. Add G to part number for regreaseable construction. Weights are in pounds, and lengths are in inches. Bolts, nuts, and washers for mounting are not included. Weights and dimensions are subject to change or correction without notice. Use certified prints for construction purposes.

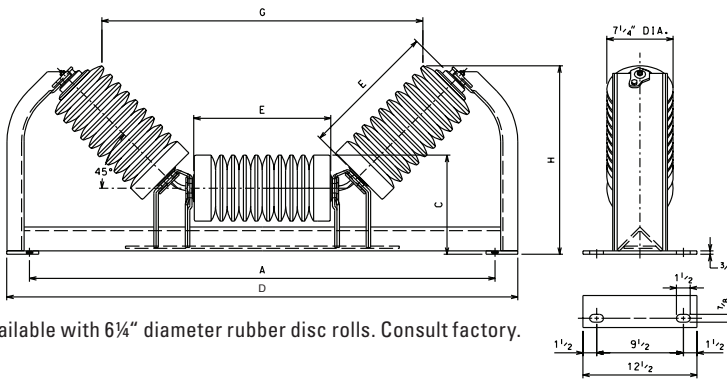
Tapered roller bearing

SDX-2200 series

CEMA E

45° impact troughing idler

7 1/4" dia. 73ASDX748-BW



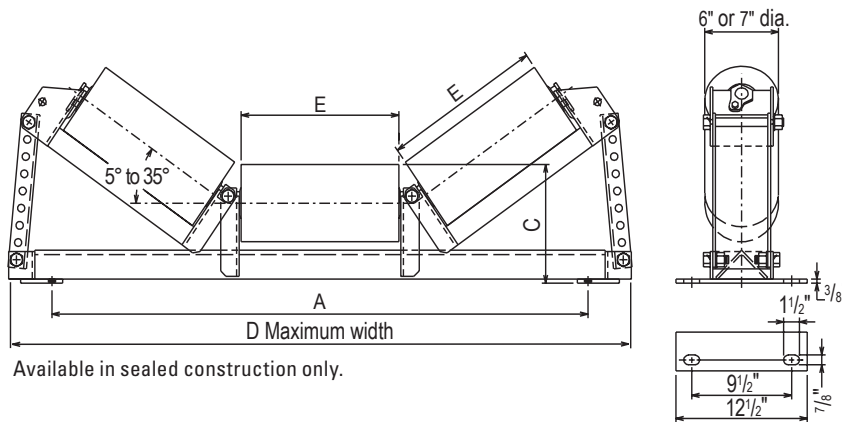
Also available with 6 1/4" diameter rubber disc rolls. Consult factory.

BW	A	C	D	E	G	H	Wt.
36	45	10 7/8	51	12 3/4	30 3/8	19 1/4	190
42	51	10 7/8	56	14 3/4	35 1/4	20 11/16	211
48	57	10 7/8	63	17 1/2	41 5/8	22 3/8	245
54	63	11 1/4	68	19 1/2	46 11/16	24 3/8	271
60	69	11 1/4	73	21 1/2	51 1/2	25 13/16	295
66	75	11 15/16	79	23 1/2	56 3/8	27 15/16	326
72	81	11 15/16	84	25 1/2	61 3/16	29 9/16	358
78	87	11 15/16	90	27 1/2	65 15/16	31 3/8	389
84	93	12 5/8	96	29 1/2	70 3/4	32 13/16	439
96	105	12 5/8	108	33 1/2	80 1/16	35 11/16	490

5° - 35° transition idler

6" dia. 73ASDX659-BW

7" dia. 73ASDX759-BW

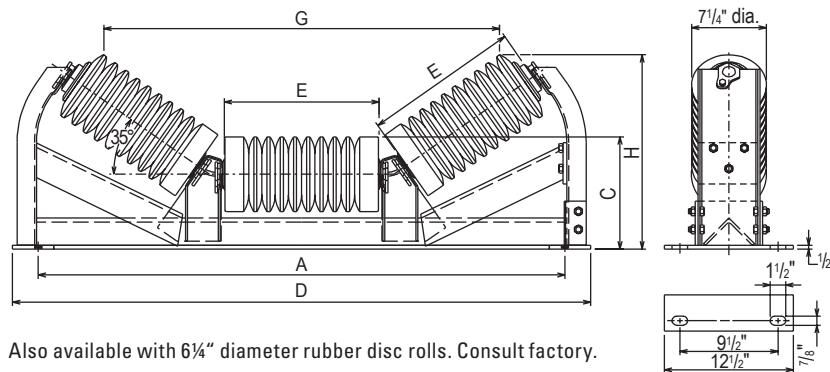


Available in sealed construction only.

BW	A	C		D	E	Wt.	
		6" Dia.	7" Dia.			6"	7"
36	45	10 1/4	10 3/4	53 3/8	13	152	178
42	51	10 1/4	10 3/4	59 1/4	15	166	195
48	57	10 1/4	10 3/4	67 1/4	17 3/4	206	222
54	63	10 5/8	11 1/8	73 1/8	19 3/4	207	245
60	69	10 5/8	11 1/8	79 1/8	21 3/4	220	262
66	75	11 5/16	11 13/16	85	23 3/4	247	292
72	81	11 5/16	11 13/16	91	25 3/4	260	311
78	87	11 5/16	11 13/16	96 3/8	27 3/4	274	328
84	93	12	12 1/2	102 7/8	29 3/4	322	379
96	105	12	12 1/2	114 7/8	33 3/4	357	420

35° impact reinforced idler w/removable end bracket

7 1/4" dia. 73AK4233-BW



Also available with 6 1/4" diameter rubber disc rolls. Consult factory.

Also available in 20° and 45°.

Part number is for regreasable idler.

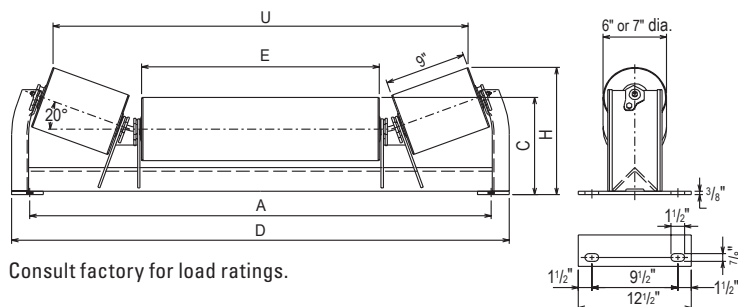
Part number for sealed idler is 73AK7103-BWS.

BW	A	C	D	E	G	H	Wt.
48	57	11	63	17 1/2	45 1/16	20 7/16	303
54	63	11 3/8	69	19 1/2	50 11/16	22	335
60	69	11 3/8	73 1/2	21 1/2	56	23 1/4	365
66	75	12 1/16	81	23 1/2	61 1/4	25 1/16	400
72	81	12 1/16	87	25 1/2	66 1/2	26 1/4	429
78	87	12 1/16	93	27 1/2	71 13/16	27 3/8	458
84	93	12 3/4	99	29 1/2	77 1/16	29 3/16	515
96	105	12 3/4	111	33 1/2	87 1/2	31 3/8	569

20° extended center roll idler

6" dia. 73ASDX605-BW

7" dia. 73ASDX705-BW



Consult factory for load ratings.

BW	A	C		D	H		U		Wt.	Wt.	
		6" Dia.	7" Dia.		6" Dia.	7" Dia.	6"	7"			
36	45	10 1/4	10 3/4	50	13 5/8	14 1/16	21	40 13/16	40 1/2	135	160
42	51	10 1/4	10 3/4	56	13 5/8	14 1/16	27	46 13/16	46 1/2	145	170
48	57	10 1/4	10 3/4	62	13 5/8	14 1/16	33	52 13/16	52 1/2	155	180
54	63	10 1/4	10 3/4	68	13 5/8	14 1/16	39	58 13/16	58 1/2	165	190
60	69	10 1/4	10 3/4	74	13 5/8	14 1/16	45	64 13/16	64 1/2	175	200
66	75	10 1/4	10 3/4	80	13 5/8	14 1/16	51	70 13/16	70 1/2	185	210
72	81	10 1/4	10 3/4	86	13 5/8	14 1/16	57	76 13/16	76 1/2	195	220
78	87	10 1/4	10 3/4	92	13 5/8	14 1/16	63	82 13/16	82 1/2	205	230
84	93	10 1/4	10 3/4	98	13 5/8	14 1/16	69	88 13/16	88 1/2	215	240
96	105	10 1/4	10 3/4	110	13 5/8	14 1/16	81	100 13/16	100 1/2	235	260

Add S to part number for sealed construction. Add G to part number for regreasable construction. Weights are in pounds, and lengths are in inches. Bolts, nuts, and washers for mounting are not included. Weights and dimensions are subject to change or correction without notice. Use certified prints for construction purposes.

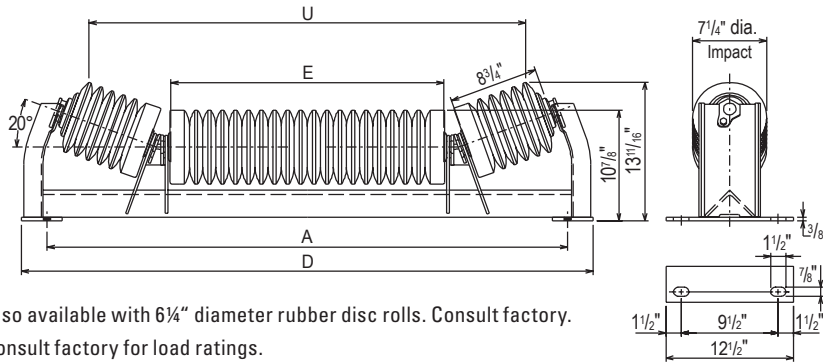
Tapered roller bearing

SDX-2200 series

CEMA E

20° extended center roll impact idler

7 1/4" dia. 73ASDX708-BW

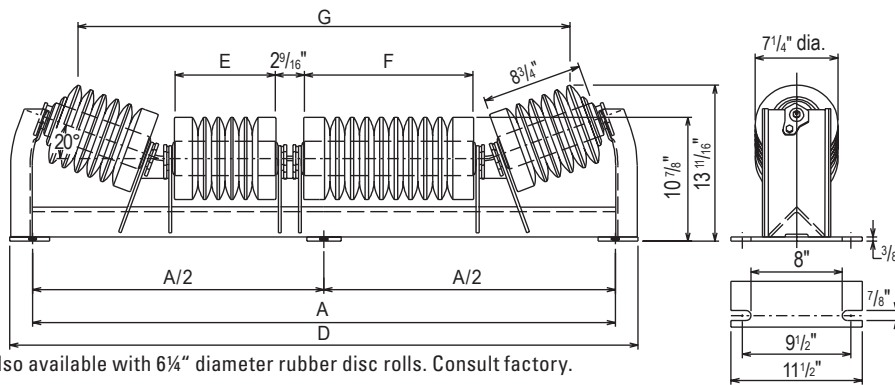


Also available with 6 1/4" diameter rubber disc rolls. Consult factory. Consult factory for load ratings.

BW	A	D	E	U	Wt. 7 1/4"
36	45	50	20 3/4	37 11/16	180
42	51	56	26 3/4	43 11/16	195
48	57	62	32 3/4	49 11/16	210
54	63	68	38 3/4	55 11/16	225
60	69	74	44 3/4	61 11/16	240
66	75	80	50 3/4	67 11/16	255
72	81	86	56 3/4	73 11/16	270
78	87	92	62 3/4	79 11/16	285
84	93	98	68 3/4	85 11/16	300
96	105	110	80 3/4	97 11/16	330

20° extended double center roll impact idler

7 1/4" dia. 73AK9104-BWG



Also available with 6 1/4" diameter rubber disc rolls. Consult factory. Consult factory for load ratings.

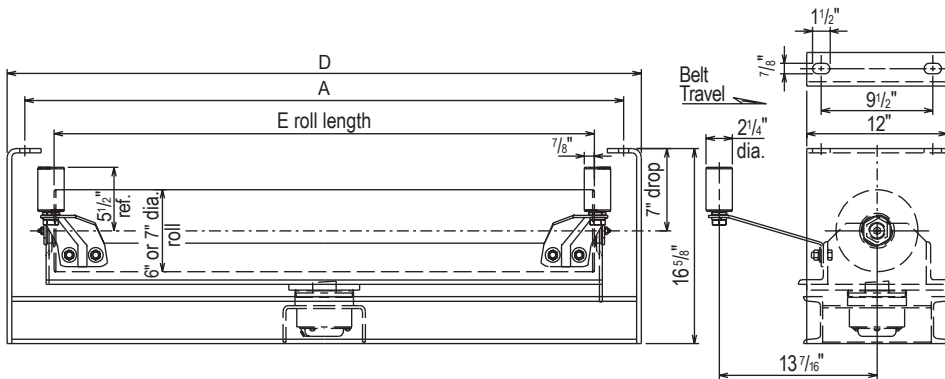
Part number is for regreasable idler. Part number for sealed idler is 73AK7755-BWSE.

BW	A	D	E	F	G	Wt. 7 1/4"
54	63	69	17 1/2	19 1/2	56 1/2	245
60	69	75	19 1/2	23 1/2	62 1/2	260
72	81	87	25 1/2	29 1/2	74 1/2	290
84	93	99	31 1/2	35 3/4	86 3/4	325
96	105	111	33 3/4	44 3/4	98	360

Self-aligning return idler

6" dia. 73ASDX619-BW

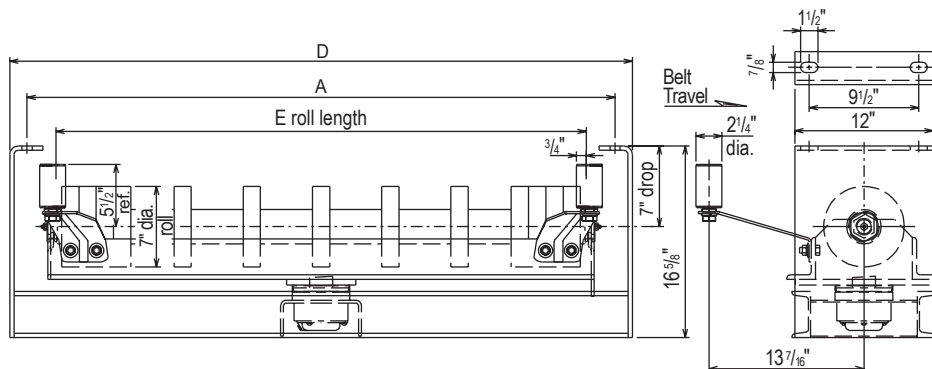
7" dia. 73ASDX719-BW



BW	A	D	E	Wt. 6"	Wt. 7"
36	45	48	40	206	232
42	51	54	46	226	256
48	57	60	52	244	279
54	63	66	58	263	301
60	69	72	64	282	324
66	75	78	70	301	347
72	81	84	76	320	370
78	87	90	82	339	393
84	93	96	88	358	416
96	105	108	100	396	462

Rubber disc self-aligning return idler

7" dia. 73ASDX721-BW



BW	A	D	E	Wt. 7"
36	45	48	39 3/4	213
42	51	54	45 3/4	236
48	57	60	51 3/4	257
54	63	66	57 3/4	279
60	69	72	63 3/4	300
66	75	78	69 3/4	322
72	81	84	75 3/4	343
78	87	90	81 3/4	365
84	93	96	87 3/4	387
96	105	108	99 3/4	431

Add S to part number for sealed construction. Add G to part number for regreasable construction. Weights are in pounds, and lengths are in inches. Bolts, nuts, and washers for mounting are not included. Weights and dimensions are subject to change or correction without notice. Use certified prints for construction purposes.

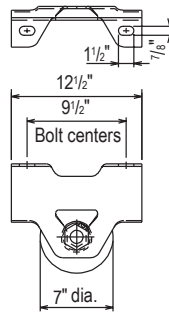
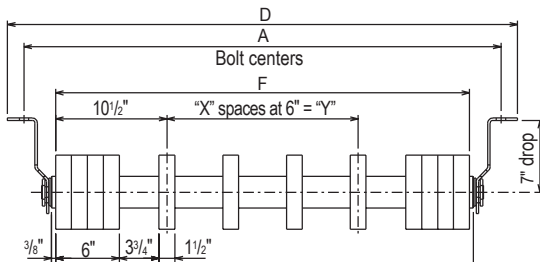
Tapered roller bearing

SDX-2200 series

CEMA E

Rubber disc return idler

7" dia. 73ASDX712-BW



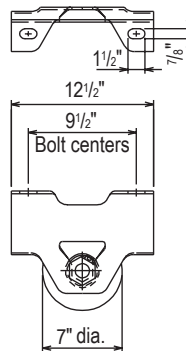
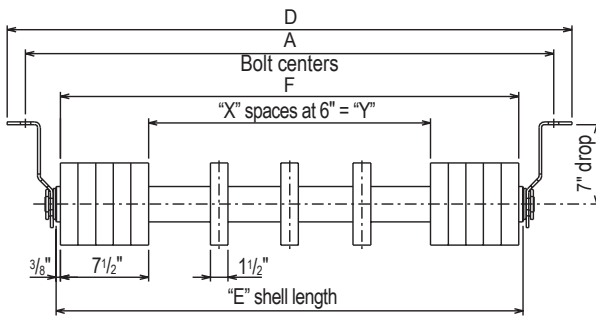
BW	A	D	E	F	X	Y	Wt.	
							7"	Disc Qty.
36	45	48 7/8	39 3/4	39	3	18	63	12
42	51	54 7/8	45 3/4	45	4	24	73	13
48	57	60 7/8	51 3/4	51	5	30	82	14
54	63	66 7/8	57 3/4	57	6	36	92	15
60	69	72 7/8	63 3/4	63	7	42	102	16
66	75	78 7/8	69 3/4	69	8	48	112	17
72	81	84 7/8	75 3/4	75	9	54	121	18
78	87	90 7/8	81 3/4	81	10	60	131	19
84	93	96 7/8	87 3/4	87	11	66	141	20
96	105	108 7/8	99 3/4	99	13	78	161	22

Drop brackets not included. Order part number 73H3725-0700.

Add 8 lbs. per bracket.

Massed end return idler

7" dia. 73AK2027-BW



BW	A	D	E	F	X	Y	Wt.	
							7"	Disc Qty.
36	45	48 7/8	39 3/4	39	4	24	65	13
42	51	54 7/8	45 3/4	45	5	30	75	14
48	57	60 7/8	51 3/4	51	6	36	84	15
54	63	66 7/8	57 3/4	57	7	42	94	16
60	69	72 7/8	63 3/4	63	8	48	104	17
66	75	78 7/8	69 3/4	69	9	54	114	18
72	81	84 7/8	75 3/4	75	10	60	123	19
78	87	90 7/8	81 3/4	81	11	66	133	20
84	93	96 7/8	87 3/4	87	12	72	143	21
96	105	108 7/8	99 3/4	99	14	84	163	23

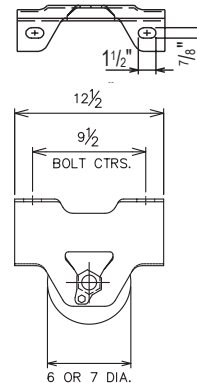
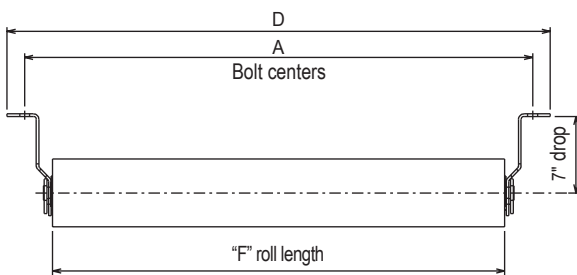
Drop brackets not included. Order part number 73H3725-0700.

Add 8 lbs. per bracket.

Return idler

6" dia. 73ASDX610-BW

7" dia. 73ASDX710-BW



BW	A	D	F	Wt.	
				6"	7"
36	45	48 7/8	40	54	80
42	51	54 7/8	46	61	91
48	57	60 7/8	52	67	101
54	63	66 7/8	58	74	112
60	69	72 7/8	64	81	123
66	75	78 7/8	70	88	134
72	81	84 7/8	76	94	144
78	87	90 7/8	82	101	155
84	93	96 7/8	88	108	166
96	105	108 7/8	100	122	188

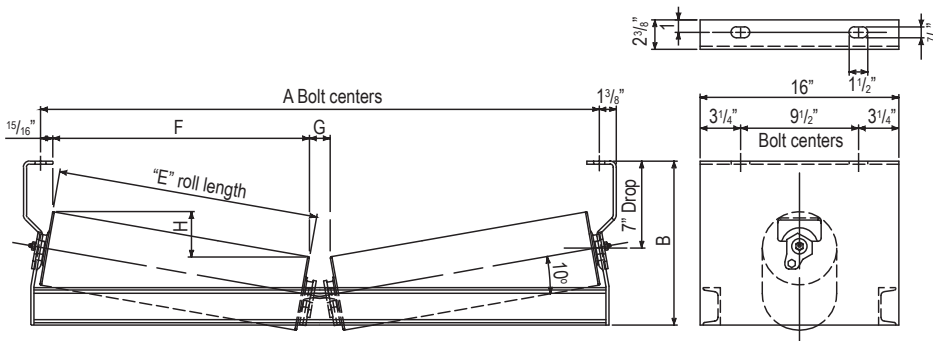
Drop brackets not included. Order part number 73H3725-0700.

Add 8 lbs. per bracket.

V return

6" dia. 73ASDX628-BW

7" dia. 73ASDX728-BW



BW	A	B	E	F	G	H
36	45	13 7/32	21	20 11/16	1 23/32	3 21/32
42	51	13 3/4	24	23 5/8	1 13/16	4 5/32
48	57	14 1/4	27	26 19/32	1 29/32	4 11/16
54	63	15 25/32	30	29 17/32	2	5 7/32
60	69	16 5/16	33	32 1/2	2 3/32	5 3/4
66	75	16 13/16	36	35 15/32	2 3/16	6 1/4
72	81	17 11/32	39	38 13/32	2 9/32	6 25/32
78	87	17 7/8	42	41 3/8	2 3/8	7 9/32
84	93	18 3/8	45	44 5/16	2 15/32	7 13/16
96	105	19 7/16	51	50 7/32	2 5/8	8 7/8

Add S to part number for sealed construction. Add G to part number for regreasable construction. Weights are in pounds, and lengths are in inches. Bolts, nuts, and washers for mounting are not included. Weights and dimensions are subject to change or correction without notice. Use certified prints for construction purposes.

CEMA F

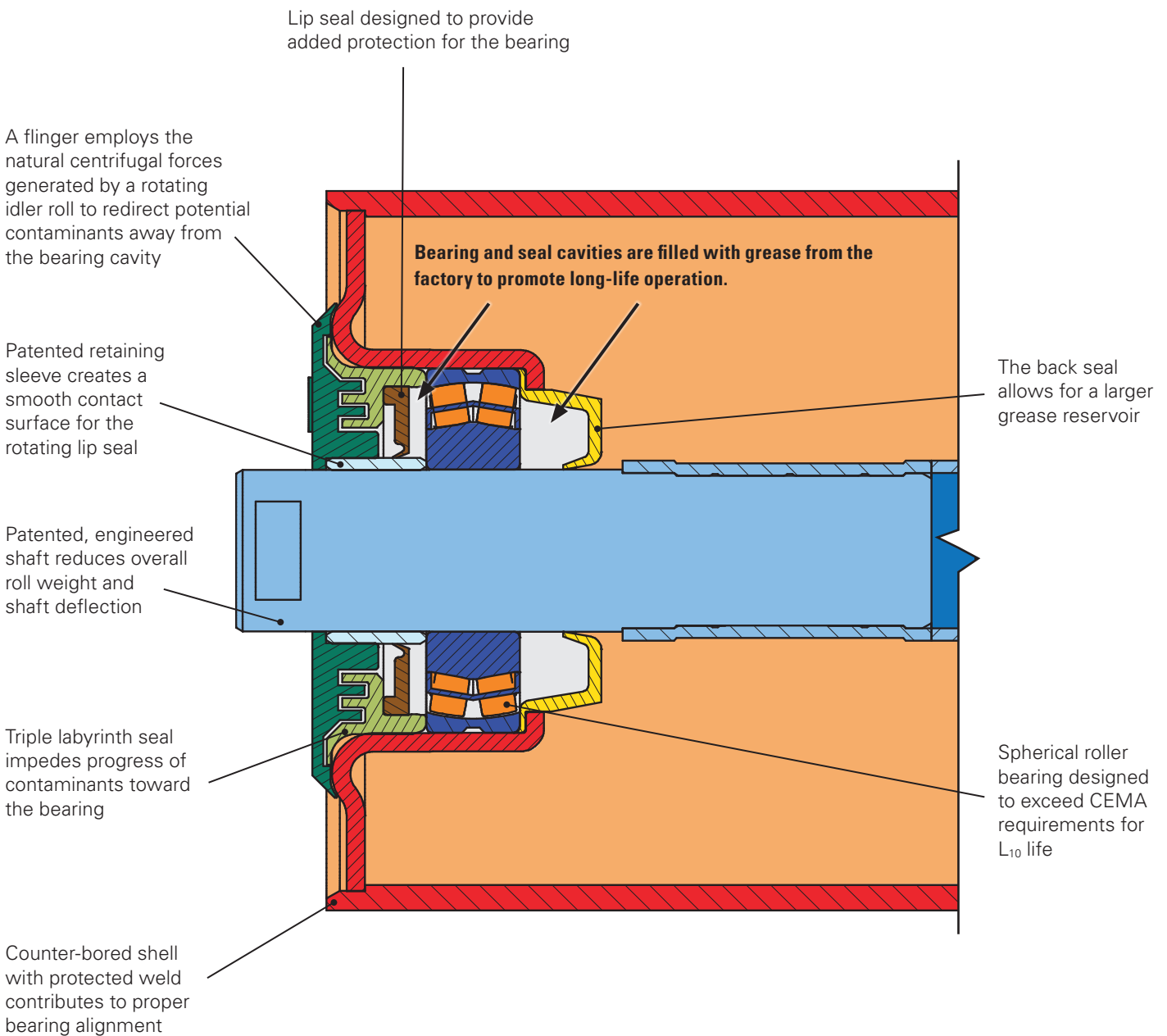
HXF-40 series

CEMA F

40mm spherical roller bearing idlers

The HXF-40 exceeds CEMA F idler load ratings and is designed for today's super high capacity operations. Applications include high tonnage mining and industrial operations, mining operations with overburden removal, and underground longwall coal mining operations that want to more closely match tonnage rates to highly productive longwall mining machines.

HXF-40 series idlers are offered with our in-line design or with our OR-C frame design from 60" to 120" BW.



Phone: +1 205 487 6492
www.cgmh.com



*See Continental Terms and Conditions for details



Products pictured, described, or listed in this publication are illustrative only and are not warranties of any kind. The only warranties that apply to sales of products and services are standard written warranties, which will be furnished upon request. Product designs and/or specifications may be changed or corrected at any time without notice. Application and use of these products must be in accordance with applicable codes and regulations and must be arranged and/or provided with covers or other guards where necessary to assure safety of personnel.

All weights are in pounds, and all lengths are in inches. Weights and dimensions are subject to change or correction without notice. Use certified prints for construction purposes.

Continental and other trademarks used herein are the property of Continental Global Material Handling LLC.

The multi-piece shaft discussed herein is covered by U.S. patent No. 9056727, U.S. patent No. 9359144, Chile patent No. 57.528, Brazil patent No. BR 112015017152-4, Mexico patent No. 362798, Mexico patent No. 394699, Canada patent No. 2898448, Australia patent No. 2014207413, Australia patent No. 2017248457, China patent No. ZL201480014797.9, and China patent No. ZL201710941134.7. The retaining sleeve is covered by U.S. patent No. 9273731, Canada patent No. 2661822, Brazil patent No. PI 0720447-7, Mexico patent No. 344214, Colombia patent No. 39830, UK patent No. 2454403, Australia patent No. 2007336784, and South Africa patent No. 2009/01306.

©2023 Continental Global Material Handling LLC. All rights reserved.

0923- V12