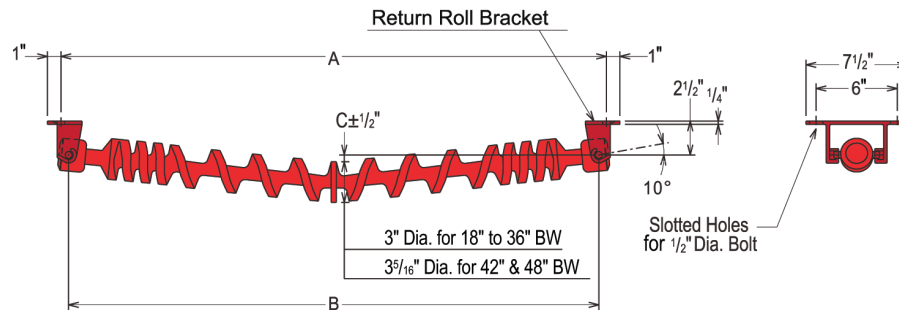




Return rolls and return roll brackets						
Roll part no.	Bracket part no.	Belt width	A	B	C	Wt.
BM 28457 UX	S24026 A	18	27	27	1/8	12
BM 28459 UX	S24026 A	24	33	33	1/4	13
BM 28461 UX	S24026 A	30	39	39	7/16	14
BM 28463 UX	S24026 A	36	45	45	9/16	15
BM 28465 UX	S30311 A	42	51	49 7/8	7/16	18
BM 28466 UX	S30311 A	48	57	55 7/8	9/16	19



Rolls and return roll brackets must be ordered separately. Bolts, nuts, and washers for mounting are not included.

**Spiral idler load ratings for 15,000 hours bearing life**

	Belt Speed in FPM (feet per minute)						
	50	100	200	300	400	500	600
<b>25° Troughing</b>							
18" to 36" belt widths	500 lbs	495 lbs	400 lbs	355 lbs	325 lbs	305 lbs	290 lbs
42" & 48" belt widths	500 lbs	500 lbs	420 lbs	370 lbs	340 lbs	315 lbs	300 lbs
<b>10° Return</b>							
18" to 36" belt widths	250 lbs	200 lbs	165 lbs	145 lbs	130 lbs	120 lbs	115 lbs
42" & 48" belt widths	260 lbs	210 lbs	170 lbs	150 lbs	135 lbs	125 lbs	120 lbs

**Notes:**

- Maximum recommended operating belt speed
  - = 500 FPM (feet per minute) for 18" to 36" belt widths
  - = 600 FPM (feet per minute) for 42" & 48" belt widths
- Maximum operating idler load is 500 lbs.



Phone: +1 205 487 6492  
[www.cgmh.com](http://www.cgmh.com)

Products pictured, described, or listed in this publication are illustrative only and are not warranties of any kind. The only warranties that apply to sales of products and services are standard written warranties, which will be furnished upon request. Product designs and/or specifications may be changed or corrected at any time without notice. Application and use of these products must be in accordance with applicable codes and regulations and must be arranged and/or provided with covers or other guards where necessary to assure safety of personnel.

All weights are in pounds, and all lengths are in inches. Weights and dimensions are subject to change or correction without notice. Use certified prints for construction purposes. Continental and other trademarks used herein are the property of Continental Global Material Handling LLC.

©2024 Continental Global Material Handling LLC. All rights reserved.  
 1024 – V5 – CC